

Anti-ABCC2 antibody (180-1545) (STJ110703)

GENERAL INFORMATION

Product Type	Primary antibodies
Applications	WB/IF/ICC/ELISA
Host / Source	Rabbit
Reactivity	Human/Mouse/Rat

PRODUCT PROPERTIES

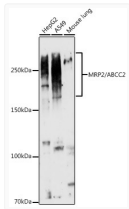
Clonality	Polyclonal
Concentration	Lot specific
Conjugation	Unconjugated
Purification	Affinity purification
Dilution Range	WB:1:500-1:1000 IF/CC:1:50-1:200 ELISA:Recommended starting concentration is 1 Mu g/mL. Please optimize the concentration based on your specific assay requirements.
Formulation	PBS with 0.09% Sodium Azide, 50% Glycerol, pH 7.3.
Isotype	IgG
Molecular Weight	Protein Mw: 174kDa Observed Mw: 200kDa-270kDa
Storage Instruction	Store at -20°C for up to 1 year from the date of receipt, and avoid repeat freeze-thaw cycles.

TARGET INFORMATION

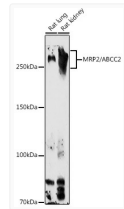
Gene ID	1244
Gene Symbol	ABCC2
UniProt ID	MRP2_HUMAN
Immunogen Region	180-1545
Immunogen Sequence	IFSAFSENNESSNNPSSIAS FLSSITYSWYDSILKGYKR PLTLEDVWEVDEEMKTKTLV SKFETHMKRELQKARRALQR RQEKSSQQNSGARLPGLNKN QSQSQDALVLEDVEKKKKKS GTKKDVPKSWLMKALF
Specificity	Recombinant fusion protein containing a sequence corresponding to amino acids 180-315 of human MRP2/ABCC2 (NP_000383.1).

ADDITIONAL INFORMATION

Note **STRICTLY FOR FURTHER SCIENTIFIC RESEARCH USE ONLY (RUO). MUST NOT TO BE USED IN DIAGNOSTIC OR THERAPEUTIC APPLICATIONS.**



Western blot analysis of various lysates using MRP2/ABCC2 Rabbit pAb (STJ110703) at 1:1000 dilution.
 Secondary antibody: HRP-conjugated Goat anti-Rabbit IgG (H+L) (STJS000856) at 1:10000 dilution.
 Lysates/proteins: 25 Mu g per lane.
 Blocking buffer: 3% nonfat dry milk in TBST.
 Detection: ECL Basic Kit
 Exposure time: 30s.



Western blot analysis of various lysates using MRP2/ABCC2 Rabbit pAb (STJ110703) at 1:1000 dilution.
 Secondary antibody: HRP-conjugated Goat anti-Rabbit IgG (H+L) (STJS000856) at 1:10000 dilution.
 Lysates/proteins: 25 Mu g per lane.
 Blocking buffer: 3% nonfat dry milk in TBST.
 Detection: ECL Basic Kit
 Exposure time: 90s.