

Anti-YTHDF3 antibody (1-275) (STJ110693)

GENERAL INFORMATION

Product Type	Primary antibodies
Applications	WB/IHC-P/IF/ICC/IP/ELISA
Host / Source	Rabbit
Reactivity	Human/Mouse/Rat

PRODUCT PROPERTIES

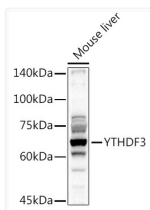
Clonality	Polyclonal
Concentration	Lot specific
Conjugation	Unconjugated
Purification	Affinity purification
Dilution Range	WB:1:500-1:1000 IHC-P:1:100-1:500 IF/ICC:1:50-1:200 IP:0.5 Mu g-4 Mu g antibody for 200 Mu g-400 Mu g extracts of whole cells ELISA:Recommended starting concentration is 1 Mu g/mL. Please optimize the concentration based on your speci
Formulation	PBS with 0.09% Sodium Azide, 50% Glycerol, pH7.3.
Isotype	IgG
Molecular Weight	Protein Mw: 64kDa Observed Mw: 64kDa
Storage Instruction	Store at -20°C for up to 1 year from the date of receipt, and avoid repeat freeze-thaw cycles.

TARGET INFORMATION

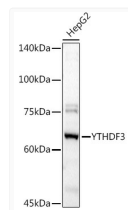
Gene ID	253943
Gene Symbol	YTHDF3
UniProt ID	YTHD3_HUMAN
Immunogen Region	1-275
Immunogen Sequence	MSATSVDRPKGQGKVKVSVQ NGSIHQKDAVNDDDFEPLYS SQTNQSNYPMPMSDPYMPYSY YAPSIGFPYSLGEAAWSTAG DQPMPYLTTYGQMSNGEHY IPDGVFSQPGALGNTPPFLG QHGFNFFPGNADFSTWGTSG SQGQSTQSSAYSSSYGYPPS SLGRAITDGGAGFGNDTL SK VPGISSIEQGMTGLKIGGDL TAAVTKVTGTLSSGMTSI ATNSVPPVSSAAPKPTSWA
Specificity	Recombinant fusion protein containing a sequence corresponding to amino acids 1-275 of human YTHDF3 (NP_689971.4).

ADDITIONAL INFORMATION

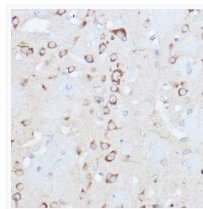
Note STRICTLY FOR FURTHER SCIENTIFIC RESEARCH USE ONLY (RUO). MUST NOT TO BE USED IN DIAGNOSTIC OR THERAPEUTIC APPLICATIONS.



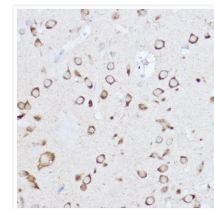
Western blot analysis of lysates from Mouse liver, using YTHDF3 Rabbit pAb (STJ110693) at 1:1000 dilution.
Secondary antibody: HRP-conjugated Goat anti-Rabbit IgG (H+L) (STJS000856) at 1:10000 dilution.
Lysates/proteins: 25 Mu g per lane.
Blocking buffer: 3% nonfat dry milk in TBST.
Detection: ECL Basic Kit
Exposure time: 90s.



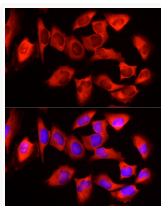
Western blot analysis of lysates from HepG2 cells, using YTHDF3 Rabbit pAb (STJ110693) at 1:1000 dilution.
Secondary antibody: HRP-conjugated Goat anti-Rabbit IgG (H+L) (STJS000856) at 1:10000 dilution.
Lysates/proteins: 25 Mu g per lane.
Blocking buffer: 3% nonfat dry milk in TBST.
Detection: ECL Basic Kit
Exposure time: 90s.



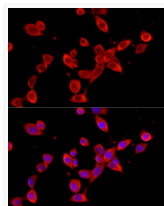
Immunohistochemistry analysis of paraffin-embedded Mouse brain using YTHDF3 Rabbit pAb (STJ110693) at dilution of 1:500 (40x lens). High pressure antigen retrieval performed with 0.01M Citrate Buffer (pH 6.0) prior to immunohistochemistry staining.



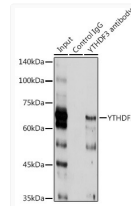
Immunohistochemistry analysis of paraffin-embedded Rat brain using YTHDF3 Rabbit pAb (STJ110693) at dilution of 1:500 (40x lens). High pressure antigen retrieval performed with 0.01M Citrate Buffer (pH 6.0) prior to immunohistochemistry staining.



Immunofluorescence analysis of HeLa cells using YTHDF3 Rabbit pAb (STJ110693) at dilution of 1:50 (40x lens). Secondary antibody: Cy3-conjugated Goat anti-Rabbit IgG (H+L) (STJS001166) at 1:500 dilution. Blue: DAPI for nuclear staining.



Immunofluorescence analysis of NIH/3T3 cells using YTHDF3 Rabbit pAb (STJ110693) at dilution of 1:50 (40x lens). Secondary antibody: Cy3-conjugated Goat anti-Rabbit IgG (H+L) (STJS001166) at 1:500 dilution. Blue: DAPI for nuclear staining.



Immunoprecipitation analysis of 300 Mu g extracts of HT-1080 cells using 3 Mu g YTHDF3 antibody (STJ110693). Western blot was performed from the immunoprecipitate using YTHDF3 antibody (STJ110693) at a dilution of 1:1000.