

## Anti-GUCA2B antibody (1-100) (STJ110688)

### GENERAL INFORMATION

Product Type	Primary antibodies
Applications	WB/ELISA
Host / Source	Rabbit
Reactivity	Mouse

### PRODUCT PROPERTIES

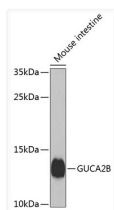
Clonality	Polyclonal
Concentration	Lot specific
Conjugation	Unconjugated
Purification	Affinity purification
Dilution Range	WB:1:500-1:2000 ELISA:Recommended starting concentration is 1 µg/mL. Please optimize the concentration based on your specific assay requirements.
Formulation	PBS with 0.02% Sodium Azide, 50% Glycerol, pH 7.3.
Isotype	IgG
Molecular Weight	Protein Mw: 12kDa Observed Mw: 12kDa
Storage Instruction	Store at -20°C for up to 1 year from the date of receipt, and avoid repeat freeze-thaw cycles.

### TARGET INFORMATION

Gene ID	<a href="#">2981</a>
Gene Symbol	<a href="#">GUCA2B</a>
UniProt ID	<a href="#">GUCA2B_HUMAN</a>
Immunogen Region	1-100
Immunogen Sequence	MGCRAASGLLPGVAVVLLLL LQSTQSVYIQYQGFRVQLES MKKLSLDLEAQWAPSPRLQAQ SLLPAVCHHPALPQDLQPVC ASQEASSIFKTLRTIANDDC
Specificity	A synthetic peptide corresponding to a sequence within amino acids 1-100 of human GUCA2B (NP_009033.1).

### ADDITIONAL INFORMATION

Note STRICTLY FOR FURTHER SCIENTIFIC RESEARCH USE ONLY (RUO). MUST NOT TO BE USED IN DIAGNOSTIC OR THERAPEUTIC APPLICATIONS.



Western blot analysis of lysates from mouse small intestine, using GUCA2B Rabbit pAb (STJ110688) at 1:1000 dilution.

Secondary antibody: HRP-conjugated Goat anti-Rabbit IgG (H+L) (STJS000856) at 1:10000 dilution.

Lysates/proteins: 25 µg per lane.

Blocking buffer: 3% nonfat dry milk in TBST.

Detection: ECL Enhanced Kit

Exposure time: 90s.