

## Anti-IL4I1 antibody (22-567) (STJ110676)

### GENERAL INFORMATION

Product Type	Primary antibodies
Applications	WB/ELISA
Host / Source	Rabbit
Reactivity	Human/Mouse/Rat

### PRODUCT PROPERTIES

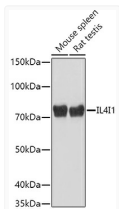
Clonality	Polyclonal
Concentration	Lot specific
Conjugation	Unconjugated
Purification	Affinity purification
Dilution Range	WB:1:500-1:1000 ELISA:Recommended starting concentration is 1 Mu g/mL. Please optimize the concentration based on your specific assay requirements.
Formulation	PBS with 0.02% Sodium Azide, 50% Glycerol, pH 7.3.
Isotype	IgG
Molecular Weight	Protein Mw: 63kDa Observed Mw: 75kDa
Storage Instruction	Store at -20°C for up to 1 year from the date of receipt, and avoid repeat freeze-thaw cycles.

### TARGET INFORMATION

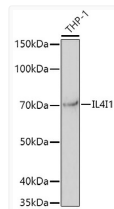
Gene ID	<a href="#">259307</a>
Gene Symbol	<a href="#">IL4I1</a>
UniProt ID	<a href="#">OXLA_HUMAN</a>
Immunogen Region	22-567
Immunogen Sequence	QDWKAERSQDPFEKCMQDPD YEQLLKVVWGLNRTLKPKQR VIVVGAGVAGLVAAKVLSDA GHKVTILEADNRIGGRIFTY RDQNTGWIGELGAMRMPSSH RILHKLCCQGLGLNLTKFTQY DKNTWTEVHEVKLRNYVVEK VPEKLGALRPQEKGHSPED IYQMALNQALKDKLALGCRK AMKKFERHTLLEYLLGEGN
Specificity	Recombinant fusion protein containing a sequence corresponding to amino acids 22-220 of human IL4I1 (NP_690863.1).

### ADDITIONAL INFORMATION

Note **STRICTLY FOR FURTHER SCIENTIFIC RESEARCH USE ONLY (RUO). MUST NOT TO BE USED IN DIAGNOSTIC OR THERAPEUTIC APPLICATIONS.**



Western blot analysis of various lysates using IL4I1 Rabbit pAb (STJ110676) at 1:1000 dilution. Secondary antibody: HRP-conjugated Goat anti-Rabbit IgG (H+L) (STJS000856) at 1:10000 dilution. Lysates/proteins: 25 Mu g per lane. Blocking buffer: 3% nonfat dry milk in TBST. Detection: ECL Basic Kit. Exposure time: 10s.



Western blot analysis of lysates from THP-1 cells, using IL4I1 Rabbit pAb (STJ110676) at 1:1000 dilution. Secondary antibody: HRP-conjugated Goat anti-Rabbit IgG (H+L) (STJS000856) at 1:10000 dilution. Lysates/proteins: 25 Mu g per lane. Blocking buffer: 3% nonfat dry milk in TBST. Detection: ECL Basic Kit. Exposure time: 180s.