

Anti-PGLS antibody (1-258) (STJ110664)

GENERAL INFORMATION

Product Type	Primary antibodies
Applications	WB/IHC-P/ELISA
Host / Source	Rabbit
Reactivity	Human/Mouse/Rat

PRODUCT PROPERTIES

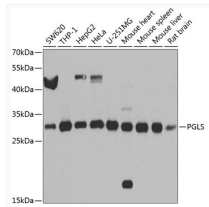
Clonality	Polyclonal
Concentration	Lot specific
Conjugation	Unconjugated
Purification	Affinity purification
Dilution Range	WB:1:500-1:2000 IHC-P:1:50-1:200 ELISA:Recommended starting concentration is 1 µg/mL. Please optimize the concentration based on your specific assay requirements.
Formulation	PBS with 0.02% Sodium Azide, 50% Glycerol, pH 7.3.
Isotype	IgG
Molecular Weight	Protein Mw: 28kDa Observed Mw: 28kDa
Storage Instruction	Store at -20°C for up to 1 year from the date of receipt, and avoid repeat freeze-thaw cycles.

TARGET INFORMATION

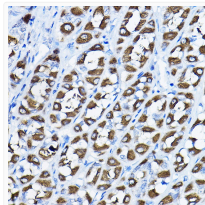
Gene ID	25796
Gene Symbol	PGLS
UniProt ID	6PGL_HUMAN
Immunogen Region	1-258
Immunogen Sequence	MAAPAPGLISVFSSSQELGA ALAQLVAQRAACCLAGARAR FALGLSGGSLVSMMLARELPA AVAPAGPASLARWTLGFCDE RLVPFDHAESTYGLYRTHLL SRLPIPESQVITINPELPVE EAAEDYAKKLRQAFQGDSPV VFDLLILGVGPDGHTCSLFP DHPLLQEREKIVAPISDSPK PPPQRVTLTLPVLNAARTVI FVATGEGKAAVLKRILEDQE ENPLPAALVQPHTGKLCWF
Specificity	Recombinant fusion protein containing a sequence corresponding to amino acids 1-258 of human PGLS (NP_036220.1).

ADDITIONAL INFORMATION

Note **STRICTLY FOR FURTHER SCIENTIFIC RESEARCH USE ONLY (RUO). MUST NOT TO BE USED IN DIAGNOSTIC OR THERAPEUTIC APPLICATIONS.**



Western blot analysis of various lysates using PGLS Rabbit pAb (STJ110664) at 1:1000 dilution. Secondary antibody: HRP-conjugated Goat anti-Rabbit IgG (H+L) (STJS000856) at 1:10000 dilution.
Lysates/proteins: 25 µg per lane.
Blocking buffer: 3% nonfat dry milk in TBST.
Detection: ECL Basic Kit
Exposure time: 5s.



Immunohistochemistry analysis of paraffin-embedded Rat stomach using PGLS Rabbit pAb (STJ110664) at dilution of 1:200 (40x lens). High pressure antigen retrieval performed with 0.01M Citrate Buffer (pH 6.0) prior to immunohistochemistry staining.