

Anti-PITRM1 antibody (758-1037) (STJ110660)

GENERAL INFORMATION

Product Type	Primary antibodies
Applications	WB/IF/ICC/ELISA
Host / Source	Rabbit
Reactivity	Human/Mouse/Rat

PRODUCT PROPERTIES

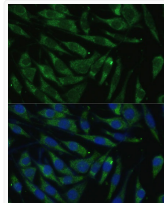
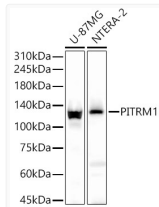
Clonality	Polyclonal
Concentration	Lot specific
Conjugation	Unconjugated
Purification	Affinity purification
Dilution Range	WB:1:500-1:2000 IF/CC:1:50-1:200 ELISA:Recommended starting concentration is 1 Mu g/mL. Please optimize the concentration based on your specific assay requirements.
Formulation	PBS with 0.02% Sodium Azide, 50% Glycerol, pH 7.3.
Isotype	IgG
Molecular Weight	Protein Mw: 117kDa Observed Mw: 117kDa
Storage Instruction	Store at -20°C for up to 1 year from the date of receipt, and avoid repeat freeze-thaw cycles.

TARGET INFORMATION

Gene ID	10531
Gene Symbol	PITRM1
UniProt ID	PREP_HUMAN
Immunogen Region	758-1037
Immunogen Sequence	IKPILRLKLPRIKKHLLNGDN MRCSVNATPQQMPQTEKAVE DFLRSIGRSKSKERRPVRPHT VEKFPVSSSGGDAHVPHGSQ VIRKLVMEPTFKPWQMKTHF LMPFPVNYVGECIRTPYTD PDHASKILARLMTAKFLHT EIREKGGAYGGGAKLSHNGI FTLYSYRDPNTIETLQSFQK AVDWAKSGKFTQQDIDEAKL SVFSTVDAPVAPSDKGMDFH LYGLSDEMKAHREQLFAV
Specificity	Recombinant fusion protein containing a sequence corresponding to amino acids 758-1037 of human PITRM1 (NP_055704.2).

ADDITIONAL INFORMATION

Note STRICTLY FOR FURTHER SCIENTIFIC RESEARCH USE ONLY (RUO). MUST NOT TO BE USED IN DIAGNOSTIC OR THERAPEUTIC APPLICATIONS.



Western blot analysis of various lysates, using PIT Secondary antibody: HRP-conjugated Goat anti-Rabbit IgG (H+L) (STJS000856) at 1:10000 dilution.

Lysates/proteins: 25 Mu g per lane.
Blocking buffer: 3% nonfat dry milk in TBST.
Detection: ECL Basic Kit
Exposure time: 90s.

Immunofluorescence analysis of L929 cells using PIT Secondary antibody: Cy3-conjugated Goat anti-Rabbit IgG (H+L) (STJS001166) at 1:500 dilution. Blue: DAPI for nuclear staining.