

Anti-PPP4R1 antibody (324-647) (STJ110659)

GENERAL INFORMATION

Product Type	Primary antibodies
Applications	WB/IP/ELISA
Host / Source	Rabbit
Reactivity	Human/Mouse

PRODUCT PROPERTIES

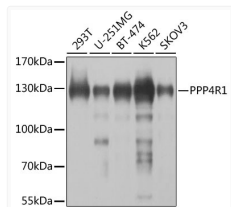
Clonality	Polyclonal
Concentration	Lot specific
Conjugation	Unconjugated
Purification	Affinity purification
Dilution Range	WB:1:500-1:2000 IP:0.5 Mu g-4 Mu g antibody for 200 Mu g extracts of whole cells ELISA:Recommended starting concentration is 1 Mu g/mL. Please optimize the concentration based on your specific assay requirements.
Formulation	PBS with 0.02% Sodium Azide, 50% Glycerol, pH 7.3.
Isotype	IgG
Molecular Weight	Protein Mw: 107kDa Observed Mw: 130kDa
Storage Instruction	Store at -20°C for up to 1 year from the date of receipt, and avoid repeat freeze-thaw cycles.

TARGET INFORMATION

Gene ID	9989
Gene Symbol	PPP4R1
UniProt ID	PP4R1_HUMAN
Immunogen Region	324-647
Immunogen Sequence	NPSSSGQYFKEEKSSEEMS VENKNRTRDQEPEDVQVRP EDTPSDLSVSNSSVILENTM EDHAAEASGKPLGEISVPLD SLLCTLSSSEHQEAASNEN DKKPGNYKSMRLPEVGTTSQ DSALLDQELYNFHFWRTPLEIDLIDLELQNSGGKPSPE GPEEESGVPSPSPNITMAT RKELEEMIENLEPHIDDPDV KAQVEVLSAALRASSLDAHE ETISIEKRSDLQDELDINE
Specificity	Recombinant fusion protein containing a sequence corresponding to amino acids 324-647 of human PPP4R1 (NP_001035847.1).

ADDITIONAL INFORMATION

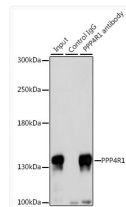
Note **STRICTLY FOR FURTHER SCIENTIFIC RESEARCH USE ONLY (RUO). MUST NOT TO BE USED IN DIAGNOSTIC OR THERAPEUTIC APPLICATIONS.**



Western blot analysis of various lysates using PPP4R1 Rabbit pAb (STJ110659) at 1:1000 dilution.

Secondary antibody: HRP-conjugated Goat anti-Rabbit IgG (H+L) (STJS000856) at 1:10000 dilution.

Lysates/proteins: 25 Mu g per lane.
 Blocking buffer: 3% nonfat dry milk in TBST.
 Detection: ECL Basic Kit
 Exposure time: 5s.



Immunoprecipitation analysis of 200 Mu g extracts of 293T cells, using 3 Mu g PPP4R1 antibody (STJ110659). Western blot was performed from the immunoprecipitate using PPP4R1 antibody (STJ110659) at a dilution of 1:1000.