

Anti-NME4 antibody (1-187) (STJ110648)

GENERAL INFORMATION

Product Type	Primary antibodies
Applications	WB/ELISA
Host / Source	Rabbit
Reactivity	Human/Mouse/Rat

PRODUCT PROPERTIES

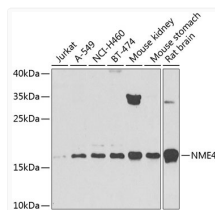
Clonality	Polyclonal
Concentration	Lot specific
Conjugation	Unconjugated
Purification	Affinity purification
Dilution Range	WB:1:500-1:2000 ELISA:Recommended starting concentration is 1 Mu g/mL. Please optimize the concentration based on your specific assay requirements.
Formulation	PBS with 0.02% Sodium Azide, 50% Glycerol, pH 7.3.
Isotype	IgG
Molecular Weight	Protein Mw: 21kDa Observed Mw: 17kDa
Storage Instruction	Store at-20°C for up to 1 year from the date of receipt, and avoid repeat freeze-thaw cycles.

TARGET INFORMATION

Gene ID	4833
Gene Symbol	NME4
UniProt ID	NDKM_HUMAN
Immunogen Region	1-187
Immunogen Sequence	MGGLFWRSALRGLRCGPRAP GPSSLVRHGSGGPSWTRERT LVAVKPDGVQRRLVGDVIQR FERRGFTLVGMKMLQAPESV LAEHYQDLRRKPFYPALIRY MSSGPVVAMVWEGYNVVRAS RAMIGHTDSAEAAPGTIRGD FSVHISRNVIHASDSVEGAQ REIQLWFQSSSELVSWADGGQ HSSIHPA
Specificity	Recombinant fusion protein containing a sequence corresponding to amino acids 1-187 of human NME4 (NP_005000.1).

ADDITIONAL INFORMATION

Note STRICTLY FOR FURTHER SCIENTIFIC RESEARCH USE ONLY (RUO). MUST NOT TO BE USED IN DIAGNOSTIC OR THERAPEUTIC APPLICATIONS.



Western blot analysis of various lysates using NME4 Rabbit pAb (STJ110648) at 1:1000 dilution. Secondary antibody: HRP-conjugated Goat anti-Rabbit IgG (H+L) (STJS000856) at 1:10000 dilution.

Lysates/proteins: 25 Mu g per lane.
 Blocking buffer: 3% nonfat dry milk in TBST.
 Detection: ECL Basic Kit
 Exposure time: 60s.