

## Anti-MB21D1 antibody (350-522) (STJ110633)

### GENERAL INFORMATION

Product Type	Primary antibodies
Applications	WB/IHC-P/IF/ICC/ELISA
Host / Source	Rabbit
Reactivity	Human/Mouse/Rat

### PRODUCT PROPERTIES

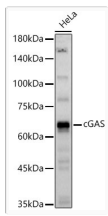
Clonality	Polyclonal
Concentration	Lot specific
Conjugation	Unconjugated
Purification	Affinity purification
Dilution Range	WB:1:500-1:1000 IHC-P:1:50-1:200 IF/ICC:1:50-1:200 ELISA:Recommended starting concentration is 1 µg/mL. Please optimize the concentration based on your specific assay requirements.
Formulation	PBS with 0.09% Sodium Azide, 50% Glycerol, pH7.3.
Isotype	IgG
Molecular Weight	Protein Mw: 59kDa Observed Mw: 62kDa/
Storage Instruction	Store at -20°C for up to 1 year from the date of receipt, and avoid repeat freeze-thaw cycles.

### TARGET INFORMATION

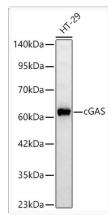
Gene ID	<a href="#">115004</a>
Gene Symbol	<a href="#">CGAS</a>
UniProt ID	<a href="#">CGAS_HUMAN</a>
Immunogen Region	350-522
Immunogen Sequence	KQLRLKPFYLVPKHAKGNG FQETWRLSFSHIEKEILNN HGKSKTCCENKEEKCCRKDC LKLKMYLLEQLKERFKDKKH LDKFSSYHVKTAFHVCTQN PQDSQWDRKDLGLCFDNCVT YFLQCLRTEKLENYFIFEFN LFSSNLIDKRSKEFLTQKIE YERNNEFPVFDEF
Specificity	Recombinant fusion protein containing a sequence corresponding to amino acids 350-522 of human cGAS (NP_612450.2).

### ADDITIONAL INFORMATION

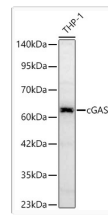
Note	STRICTLY FOR FURTHER SCIENTIFIC RESEARCH USE ONLY (RUO). MUST NOT TO BE USED IN DIAGNOSTIC OR THERAPEUTIC APPLICATIONS.
------	---



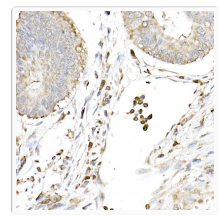
Western blot analysis of lysates from HeLa cells using cGAS Rabbit pAb (STJ110633) at 1:1000 dilution.  
 Secondary antibody: HRP-conjugated Goat anti-Rabbit IgG (H+L) (STJS000856) at 1:10000 dilution.  
 Lysates/proteins: 25 Mu g per lane.  
 Blocking buffer: 3% nonfat dry milk in TBST.  
 Detection: ECL Basic Kit  
 Exposure time: 30s.



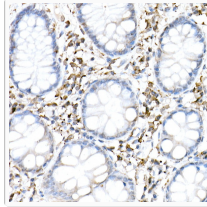
Western blot analysis of lysates from HT-29 cells using cGAS Rabbit pAb (STJ110633) at 1:1000 dilution incubated overnight at 4 °C.  
 Secondary antibody: HRP-conjugated Goat anti-Rabbit IgG (H+L) (STJS000856) at 1:10000 dilution.  
 Lysates/proteins: 25 Mu g per lane.  
 Blocking buffer: 3% nonfat dry milk in TBST.  
 Detection: ECL Basic Kit  
 Exposure time: 60s.



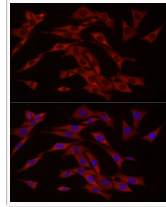
Western blot analysis of lysates from THP-1 cells using cGAS Rabbit pAb (STJ110633) at 1:1000 dilution incubated overnight at 4 °C.  
 Secondary antibody: HRP-conjugated Goat anti-Rabbit IgG (H+L) (STJS000856) at 1:10000 dilution.  
 Lysates/proteins: 25 Mu g per lane.  
 Blocking buffer: 3% nonfat dry milk in TBST.  
 Detection: ECL Basic Kit  
 Exposure time: 60s.



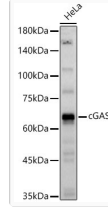
Immunohistochemistry analysis of paraffin-embedded Human colon carcinoma using cGAS Rabbit pAb (STJ110633) at dilution of 1:50 (40x lens). High pressure antigen retrieval performed with 0.01M Citrate Bufferr (pH 6.0) prior to immunohistochemistry staining.



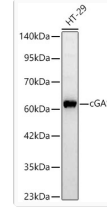
Immunohistochemistry analysis of paraffin-embedded Human colon using cGAS Rabbit pAb (STJ110633) at dilution of 1:50 (40x lens). High pressure antigen retrieval performed with 0.01M Citrate Bufferr (pH 6.0) prior to immunohistochemistry staining.



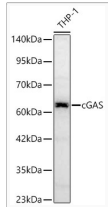
Immunofluorescence analysis of NIH/3T3 cells using cGAS Rabbit pAb (STJ110633) at dilution of 1:50 (40x lens). Secondary antibody: Cy3-conjugated Goat anti-Rabbit IgG (H+L) (STJS001166) at 1:500 dilution. Blue: DAPI for nuclear staining.



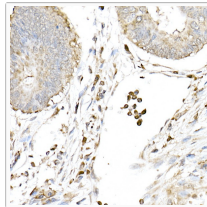
Western blot analysis of lysates from HeLa cells using cGAS Rabbit pAb (STJ110633) at 1:1000 dilution.  
 Secondary antibody: HRP-conjugated Goat anti-Rabbit IgG (H+L) (STJS000856) at 1:10000 dilution.  
 Lysates/proteins: 25 Mu g per lane.  
 Blocking buffer: 3% nonfat dry milk in TBST.  
 Detection: ECL Basic Kit  
 Exposure time: 30s.



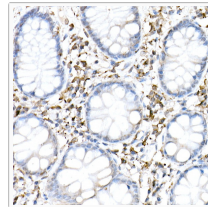
Western blot analysis of lysates from HT-29 cells using cGAS Rabbit pAb (STJ110633) at 1:1000 dilution incubated overnight at 4C.  
 Secondary antibody: HRP-conjugated Goat anti-Rabbit IgG (H+L) (STJS000856) at 1:10000 dilution.  
 Lysates/proteins: 25 Mu g per lane.  
 Blocking buffer: 3% nonfat dry milk in TBST.  
 Detection: ECL Basic Kit  
 Exposure time: 60s.



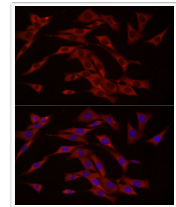
Western blot analysis of lysates from THP-1 cells using cGAS Rabbit pAb (STJ110633) at 1:1000 dilution incubated overnight at 4C.  
 Secondary antibody: HRP-conjugated Goat anti-Rabbit IgG (H+L) (STJS000856) at 1:10000 dilution.  
 Lysates/proteins: 25 Mu g per lane.  
 Blocking buffer: 3% nonfat dry milk in TBST.  
 Detection: ECL Basic Kit  
 Exposure time: 90s.



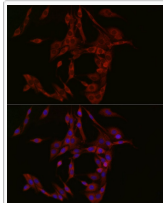
Immunohistochemistry analysis of paraffin-embedded Human colon using cGAS Rabbit pAb (STJ110633) at dilution of 1:50 (40x lens). High pressure antigen retrieval performed with 0.01M Citrate Bufferr (pH 6.0) prior to immunohistochemistry staining.



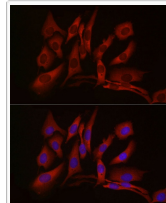
Immunohistochemistry analysis of paraffin-embedded Human colon using cGAS Rabbit pAb (STJ110633) at dilution of 1:50 (40x lens). High pressure antigen retrieval performed with 0.01M Citrate Bufferr (pH 6.0) prior to immunohistochemistry staining.



Immunofluorescence analysis of NIH/3T3 cells using cGAS Rabbit pAb (STJ110633) at dilution of 1:50 (40x lens). Secondary antibody: Cy3-conjugated Goat anti-Rabbit IgG (H+L) (STJS001166) at 1:500 dilution. Blue: DAPI for nuclear staining.



Immunofluorescence analysis of PC-12 cells using cGAS Rabbit pAb (STJ110633) at dilution of 1:50 (40x lens). Secondary antibody: Cy3-conjugated Goat anti-Rabbit IgG (H+L) (STJS001166) at 1:500 dilution. Blue: DAPI for nuclear staining.



Immunofluorescence analysis of U2OS cells using cGAS Rabbit pAb (STJ110633) at dilution of 1:50 (40x lens). Secondary antibody: Cy3-conjugated Goat anti-Rabbit IgG (H+L) (STJS001166) at 1:500 dilution. Blue: DAPI for nuclear staining.