

Anti-AP1M2 antibody (164-423) (STJ110629)

GENERAL INFORMATION

Product Type	Primary antibodies
Applications	WB/IF/ICC/ELISA
Host / Source	Rabbit
Reactivity	Human/Mouse/Rat

PRODUCT PROPERTIES

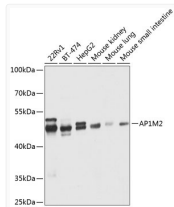
Clonality	Polyclonal
Concentration	Lot specific
Conjugation	Unconjugated
Purification	Affinity purification
Dilution Range	WB:1:500-1:2000 IF/CC:1:50-1:200 ELISA:Recommended starting concentration is 1 Mu g/mL. Please optimize the concentration based on your specific assay requirements.
Formulation	PBS with 0.02% Sodium Azide, 50% Glycerol, pH 7.3.
Isotype	IgG
Molecular Weight	Protein Mw: 48kDa Observed Mw: 48kDa
Storage Instruction	Store at -20°C for up to 1 year from the date of receipt, and avoid repeat freeze-thaw cycles.

TARGET INFORMATION

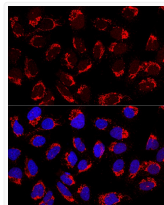
Gene ID	10053
Gene Symbol	AP1M2
UniProt ID	AP1M2_HUMAN
Immunogen Region	164-423
Immunogen Sequence	IKYKKNFVDFVIESVNLV NANGSVLLSEIVGTIKLVF LSGMPELRLGLNDRVLFELT GRSKNKSVLEEDVKFHQCVR LSRFDNDRITSFIPPDGDFE LMSYRLSTQVKPLIWIESVI EKFSHSRVEIMVKAKGQFK QSVANGVEISVPVPSDADSP RFKTSVGSAKYVPERNVVIV SIKSFPGGKEYLMRAHFGLP SVEKEEVEGRPPIGVKFEIP YFTVSGIQVRYMKIIEKSG
Specificity	Recombinant fusion protein containing a sequence corresponding to amino acids 164-423 of human AP1M2 (NP_005489.2).

ADDITIONAL INFORMATION

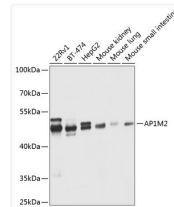
Note STRICTLY FOR FURTHER SCIENTIFIC RESEARCH USE ONLY (RUO). MUST NOT TO BE USED IN DIAGNOSTIC OR THERAPEUTIC APPLICATIONS.



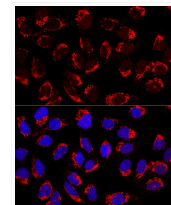
Western blot analysis of various lysates using AP1M2 Rabbit pAb (STJ110629) at 1:1000 dilution. Secondary antibody: HRP-conjugated Goat anti-Rabbit IgG (H+L) (STJS000856) at 1:10000 dilution. Lysates/proteins: 25 Mu g per lane. Blocking buffer: 3% nonfat dry milk in TBST. Detection: ECL Enhanced Kit Exposure time: 1s.



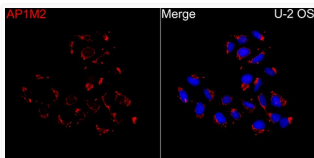
Confocal immunofluorescence analysis of U2OS cells using AP1M2 Rabbit pAb (STJ110629) at a dilution of 1:200. Blue: DAPI for nuclear staining.



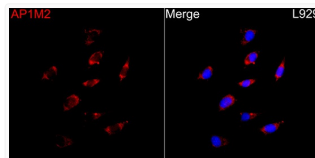
Western blot analysis of various lysates using AP1M2 Rabbit pAb (STJ110629) at 1:1000 dilution. Secondary antibody: HRP Goat Anti-Rabbit IgG (H+L) (STJS000856) at 1:10000 dilution. Lysates/proteins: 25 Mu g per lane. Blocking buffer: 3% nonfat dry milk in TBST. Detection: ECL Enhanced Kit Exposure time: 1s.



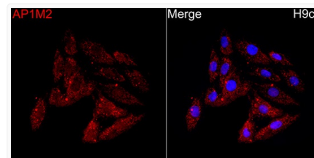
Confocal immunofluorescence analysis of U2OS cells using AP1M2 Rabbit pAb (STJ110629) at a dilution of 1:200. Blue: DAPI for nuclear staining.



Immunofluorescence analysis of U-2 OS cells using AP1M2 Rabbit pAb (STJ110629) at a dilution of 1:100 (40x lens). Secondary antibody: Cy3 Goat Anti-Rabbit IgG (H+L) (STJS001166) at 1:500 dilution. Blue: DAPI for nuclear staining.



Immunofluorescence analysis of L929 cells using AP1M2 Rabbit pAb (STJ110629) at a dilution of 1:100 (40x lens). Secondary antibody: Cy3 Goat Anti-Rabbit IgG (H+L) (STJS001166) at 1:500 dilution. Blue: DAPI for nuclear staining.



Immunofluorescence analysis of H9c2 cells using AP1M2 Rabbit pAb (STJ110629) at a dilution of 1:100 (40x lens). Secondary antibody: Cy3 Goat Anti-Rabbit IgG (H+L) (STJS001166) at 1:500 dilution. Blue: DAPI for nuclear staining.