

Anti-TRH antibody (25-230) (STJ110620)

GENERAL INFORMATION

Product Type	Primary antibodies
Applications	WB/IF/ICC/ELISA
Host / Source	Rabbit
Reactivity	Human/Mouse/Rat

PRODUCT PROPERTIES

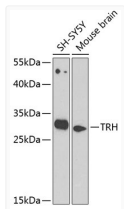
Clonality	Polyclonal
Concentration	Lot specific
Conjugation	Unconjugated
Purification	Affinity purification
Dilution Range	WB:1:500-1:2000 IF/CC:1:100-1:500 ELISA:Recommended starting concentration is 1 Mu g/mL. Please optimize the concentration based on your specific assay requirements.
Formulation	PBS with 0.02% Sodium Azide, 50% Glycerol, pH 7.3.
Isotype	IgG
Molecular Weight	Protein Mw: 27kDa Observed Mw: 27kDa
Storage Instruction	Store at -20°C for up to 1 year from the date of receipt, and avoid repeat freeze-thaw cycles.

TARGET INFORMATION

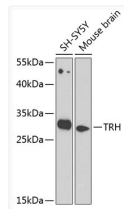
Gene ID	7200
Gene Symbol	TRH
UniProt ID	TRH_HUMAN
Immunogen Region	25-230
Immunogen Sequence	QPEAAQQEAVTAAEHPGLDD FLRQVERLLFLRENIQRLQG DQGEHSASQIFQSDWLSKRQ HPGKREEEEEEGVEEEEEEE GGAVGPHKRQHPGRREDEAS WSDVDTQHKRQHPGRRSPWL AYAVPKRQHPGRRRLADPKAQ RSWEEEEEEEEREEDLMPEK RQHPGKRALGGPCGPQGAYG QAGLLGLLDDLRSRSQGAE K RQHPG
Specificity	A synthetic peptide corresponding to a sequence within amino acids 25-230 of human TRH (NP_009048.1).

ADDITIONAL INFORMATION

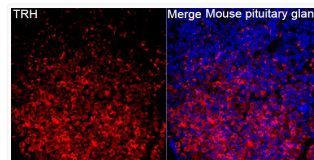
Note **STRICTLY FOR FURTHER SCIENTIFIC RESEARCH USE ONLY (RUO). MUST NOT TO BE USED IN DIAGNOSTIC OR THERAPEUTIC APPLICATIONS.**



Western blot analysis of various lysates using TRH Rabbit pAb (STJ110620) at 1:1000 dilution. Secondary antibody: HRP-conjugated Goat anti-Rabbit IgG (H+L) (STJS000856) at 1:10000 dilution. Lysates/proteins: 25 Mu g per lane. Blocking buffer: 3% nonfat dry milk in TBST. Detection: ECL Basic Kit Exposure time: 90s.



Western blot analysis of various lysates using TRH Rabbit pAb (STJ110620) at 1:1000 dilution. Secondary antibody: HRP-conjugated Goat anti-Rabbit IgG (H+L) (STJS000856) at 1:10000 dilution. Lysates/proteins: 25 Mu g per lane. Blocking buffer: 3% nonfat dry milk in TBST. Detection: ECL Basic Kit Exposure time: 90s.



Immunofluorescence analysis of Mouse pituitary gland tissue using TRH Rabbit pAb (STJ110620) at a dilution of 1:300 (40x lens). Secondary antibody: Cy3 Goat Anti-Rabbit IgG (H+L) (STJS001166) at 1:500 dilution. Blue: DAPI for nuclear staining. High pressure antigen retrieval performed with 0.01M Citrate Buffer (pH 6.0) prior to IF staining.