

Anti-MRPL12 antibody (1-198) (STJ110616)

GENERAL INFORMATION

Product Type	Primary antibodies
Applications	WB/IHC-P/IF/ICC/ELISA
Host / Source	Rabbit
Reactivity	Human/Mouse/Rat

PRODUCT PROPERTIES

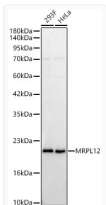
Clonality	Polyclonal
Concentration	Lot specific
Conjugation	Unconjugated
Purification	Affinity purification
Dilution Range	WB:1:500-1:2000 IHC-P:1:50-1:200 IF/CC:1:50-1:200 ELISA:Recommended starting concentration is 1 Mu g/mL. Please optimize the concentration based on your specific assay requirements.
Formulation	PBS with 0.02% Sodium Azide, 50% Glycerol, pH 7.3.
Isotype	IgG
Molecular Weight	Protein Mw: 21kDa Observed Mw: 21kDa
Storage Instruction	Store at -20°C for up to 1 year from the date of receipt, and avoid repeat freeze-thaw cycles.

TARGET INFORMATION

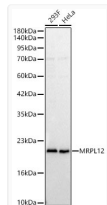
Gene ID	6182
Gene Symbol	MRPL12
UniProt ID	RM12_HUMAN
Immunogen Region	1-198
Immunogen Sequence	MLPAAARPLWGPCPLGLRAAA FRLARRQVPCVCAVRHMRSS GHQRCEALAGAPLDNAPKEY PPKIQQLVQDIASLTLLLEIS DLNELLKKTLLKIQDVGLVPM GGVMMSGAVPAAAAQEAVEED IPIAKERTHFTVRLTEAKPV DKVKLIKEIKNYIQGINLVQ AKKLVESLPQEIKANVAKAE AEKIKAAALEAVGGTVVLE
Specificity	Recombinant fusion protein containing a sequence corresponding to amino acids 1-198 of human MRPL12 (NP_002940.2).

ADDITIONAL INFORMATION

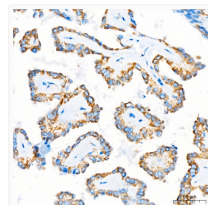
Note STRICTLY FOR FURTHER SCIENTIFIC RESEARCH USE ONLY (RUO). MUST NOT TO BE USED IN DIAGNOSTIC OR THERAPEUTIC APPLICATIONS.



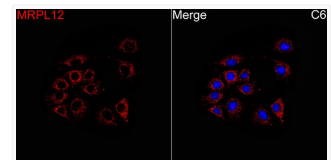
Western blot analysis of various lysates using MRPL12 Rabbit pAb (STJ110616) at 1:1000 dilution.
Secondary antibody: HRP-conjugated Goat anti-Rabbit IgG (H+L) (STJS000856) at 1:10000 dilution.
Lysates/ proteins: 25 Mu g per lane.
Blocking buffer: 3 % nonfat dry milk in TBST.
Detection: ECL Basic Kit
Exposure time: 30s.



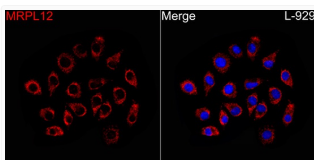
Western blot analysis of various lysates using MRPL12 Rabbit pAb (STJ110616) at 1:1000 dilution.
Secondary antibody: HRP Goat Anti-Rabbit IgG (H+L) (STJS000856) at 1:10000 dilution.
Lysates/ proteins: 25 Mu g per lane.
Blocking buffer: 3 % nonfat dry milk in TBST.
Detection: ECL Basic Kit
Exposure time: 30s.



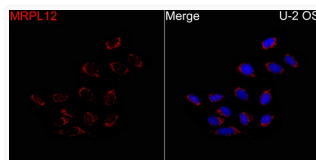
Immunohistochemistry analysis of MRPL12 in paraffin-embedded human thyroid cancer tissue using MRPL12 Rabbit pAb (STJ110616) at a dilution of 1:100 (40x lens). High pressure antigen retrieval was performed with 0.01 M citrate buffer (pH 6.0) prior to immunohistochemistry staining.



Immunofluorescence analysis of C6 cells using MRPL12 Rabbit pAb (STJ110616) at a dilution of 1:100 (40x lens). Secondary antibody: Cy3-conjugated Goat anti-Rabbit IgG (H+L) (STJS001166) at 1:500 dilution. Blue: DAPI for nuclear staining.



Immunofluorescence analysis of L-929 cells using MRPL12 Rabbit pAb (STJ110616) at a dilution of 1:100 (40x lens). Secondary antibody: Cy3-conjugated Goat anti-Rabbit IgG (H+L) (STJS001166) at 1:500 dilution. Blue: DAPI for nuclear staining.



Immunofluorescence analysis of U-2 OS cells using MRPL12 Rabbit pAb (STJ110616) at a dilution of 1:100 (40x lens). Secondary antibody: Cy3-conjugated Goat anti-Rabbit IgG (H+L) (STJS001166) at 1:500 dilution. Blue: DAPI for nuclear staining.