

Anti-IL25 antibody (33-177) (STJ110551)

GENERAL INFORMATION

Product Type	Primary antibodies
Applications	WB/IF/ICC/ELISA
Host / Source	Rabbit
Reactivity	Human/Mouse/Rat

PRODUCT PROPERTIES

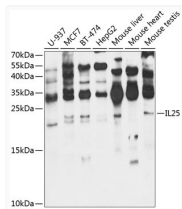
Clonality	Polyclonal
Concentration	Lot specific
Conjugation	Unconjugated
Purification	Affinity purification
Dilution Range	WB:1:500-1:2000 IF/CC:1:50-1:200 ELISA:Recommended starting concentration is 1 Mu g/mL. Please optimize the concentration based on your specific assay requirements.
Formulation	PBS with 0.05% Proclin300, 50% Glycerol, pH 7.3.
Isotype	IgG
Molecular Weight	Protein Mw: 20kDa Observed Mw: 20kDa
Storage Instruction	Store at -20°C for up to 1 year from the date of receipt, and avoid repeat freeze-thaw cycles.

TARGET INFORMATION

Gene ID	64806
Gene Symbol	IL25
UniProt ID	IL25_HUMAN
Immunogen Region	33-177
Immunogen Sequence	YSHWPSCCPKSGQDTSSEELL RWSTVPVPPLEPARPNRHPE SCRASEDGPLNSRAISPWRY ELDRDLNRLPQDLYHARCLC PHCVSLQGTGSHMDPRGNSEL LYHNQTVFYRRPCHGEKGTH KGYCLERRLYRVSLACVCVR PRVMG
Specificity	Recombinant fusion protein containing a sequence corresponding to amino acids 33-177 of human IL25 (NP_073626.1).

ADDITIONAL INFORMATION

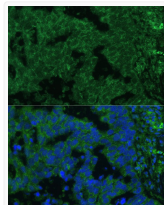
Note **STRICTLY FOR FURTHER SCIENTIFIC RESEARCH USE ONLY (RUO). MUST NOT TO BE USED IN DIAGNOSTIC OR THERAPEUTIC APPLICATIONS.**



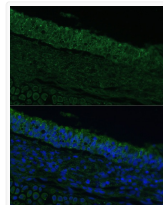
Western blot analysis of lysates from wild type (WT) and 293T cells transfected with 17E/IL25 using IL25 Rabbit pAb (STJ110551) at 1:2000 dilution.

Secondary antibody: HRP-conjugated Goat anti-Rabbit IgG (H+L) (STJS000856) at 1:10000 dilution.

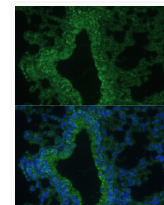
Lysates/ proteins: 25 Mu g per lane.
Blocking buffer: 3 % nonfat dry milk in TBST.
Detection: ECL Basic Kit
Exposure time: 90s.



Immunofluorescence analysis of paraffin-embedded human lung cancer using IL25 Rabbit pAb (STJ110551) at dilution of 1:100. Secondary antibody: Cy3-conjugated Goat anti-Rabbit IgG (H+L) (STJS001166) at 1:500 dilution. Blue: DAPI for nuclear staining.



Immunofluorescence analysis of paraffin-embedded rat bronchus using IL25 Rabbit pAb (STJ110551) at dilution of 1:100. Secondary antibody: Cy3-conjugated Goat anti-Rabbit IgG (H+L) (STJS001166) at 1:500 dilution. Blue: DAPI for nuclear staining.



Immunofluorescence analysis of paraffin-embedded mouse lung using IL25 Rabbit pAb (STJ110551) at dilution of 1:100. Secondary antibody: Cy3-conjugated Goat anti-Rabbit IgG (H+L) (STJS001166) at 1:500 dilution. Blue: DAPI for nuclear staining.