

## Anti-ATAD3A antibody (1-240) (STJ110529)

### GENERAL INFORMATION

Product Type	Primary antibodies
Applications	WB/IHC-P/ELISA
Host / Source	Rabbit
Reactivity	Human/Mouse/Rat

### PRODUCT PROPERTIES

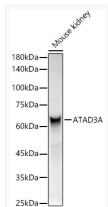
Clonality	Polyclonal
Concentration	Lot specific
Conjugation	Unconjugated
Purification	Affinity purification
Dilution Range	WB:1:500-1:1000 IHC-P:1:100-1:200 ELISA:Recommended starting concentration is 1 µg/mL. Please optimize the concentration based on your specific assay requirements.
Formulation	PBS with 0.09% Sodium Azide, 50% Glycerol, pH7.3.
Isotype	IgG
Molecular Weight	Protein Mw: 71kDa Observed Mw: 68kDa
Storage Instruction	Store at -20°C for up to 1 year from the date of receipt, and avoid repeat freeze-thaw cycles.

### TARGET INFORMATION

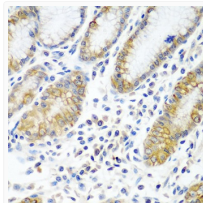
Gene ID	<a href="#">55210</a> <a href="#">83858</a>
Gene Symbol	<a href="#">ATAD3A</a> <a href="#">ATAD3B</a>
UniProt ID	<a href="#">ATD3A_HUMAN</a> <a href="#">ATD3B_HUMAN</a>
Immunogen Region	1-240
Immunogen Sequence	MSWLFGINKGPKGEGAGPPP PLPPAQPGAEGGGDRGLGDR PPKDKWSNFDPTGLERA AAARELEHSRYAKDALNLAQM QEQLTLQLEQQSKLKEYEAAV EQLKSEQIRAQAEERRKTL EETRQHQARAQYQDKLARQR YEDQLKQQQLLNEENLRKQE ESVQKQEAAMRRATVEREMEL RHKNEMLRVEAEARARAKAE RENADIIREQIRLKAAEHRQ TVLESIRTAGTLFGEGFRA
Specificity	Recombinant fusion protein containing a sequence corresponding to amino acids 1-240 of human ATAD3A (NP_001164006.1).

### ADDITIONAL INFORMATION

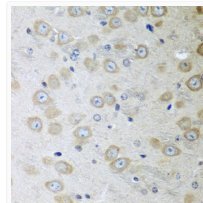
Note **STRICTLY FOR FURTHER SCIENTIFIC RESEARCH USE ONLY (RUO). MUST NOT TO BE USED IN DIAGNOSTIC OR THERAPEUTIC APPLICATIONS.**



Western blot analysis of lysates from Mouse kidney, using ATAD3A Rabbit pAb (STJ110529) at 1:400 dilution.  
 Secondary antibody: HRP-conjugated Goat anti-Rabbit IgG (H+L) (STJS000856) at 1:10000 dilution.  
 Lysates/proteins: 25 µg per lane.  
 Blocking buffer: 3% nonfat dry milk in TBST.  
 Detection: ECL Basic Kit  
 Exposure time: 3s.



Immunohistochemistry analysis of paraffin-embedded Human stomach using ATAD3A Rabbit pAb (STJ110529) at dilution of 1:100 (40x lens).  
 Microwave antigen retrieval performed with 0.01M PBS Buffer (pH 7.2) prior to immunohistochemistry staining.



Immunohistochemistry analysis of paraffin-embedded Mouse brain using ATAD3A Rabbit pAb (STJ110529) at dilution of 1:100 (40x lens).  
 Microwave antigen retrieval performed with 0.01M PBS Buffer (pH 7.2) prior to immunohistochemistry staining.