

## Anti-WWTR1 antibody (1-400) (STJ110501)

### GENERAL INFORMATION

Product Type	Primary antibodies
Applications	WB/IHC-P/IF/ICC/ELISA
Host / Source	Rabbit
Reactivity	Human/Mouse/Rat

### PRODUCT PROPERTIES

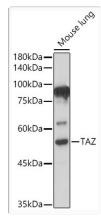
Clonality	Polyclonal
Concentration	Lot specific
Conjugation	Unconjugated
Purification	Affinity purification
Dilution Range	WB:1:500-1:1000 IHC-P:1:50-1:200 IF/ICC:1:50-1:200 ELISA:Recommended starting concentration is 1 µg/mL. Please optimize the concentration based on your specific assay requirements.
Formulation	PBS with 0.02% Sodium Azide, 50% Glycerol, pH 7.3.
Isotype	IgG
Molecular Weight	Protein Mw: 44kDa Observed Mw: 55kDa
Storage Instruction	Store at -20°C for up to 1 year from the date of receipt, and avoid repeat freeze-thaw cycles.

### TARGET INFORMATION

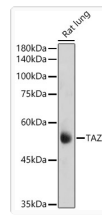
Gene ID	<a href="#">25937</a>
Gene Symbol	<a href="#">WWTR1</a>
UniProt ID	<a href="#">WWTR1_HUMAN</a>
Immunogen Region	1-400
Immunogen Sequence	MNPASAPPLPPPGQQVIHV TQDLDTDLEALFNSVMNPKP SSWRKKILPESFFKEPDSGS HSRQSTDSGGHHPGRLAG GAQHVRSHSSPASLQLGTGA GAAGSPAQQHAHLRQQSYDV TDELPLPPGWEMTFTATGQR YFLNHIEKITTWQDPRKAMN QPLNHMNLHPAVSSTPVPQR SMAVSQPNLVMNHQHQQQMA PSTLSQQNHPTQNPPAGLMS MPNALTQQQ
Specificity	Recombinant fusion protein containing a sequence corresponding to amino acids 1-230 of human TAZ (NP_056287.1).

### ADDITIONAL INFORMATION

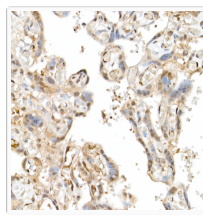
Note	STRICTLY FOR FURTHER SCIENTIFIC RESEARCH USE ONLY (RUO). MUST NOT TO BE USED IN DIAGNOSTIC OR THERAPEUTIC APPLICATIONS.
------	-------------------------------------------------------------------------------------------------------------------------



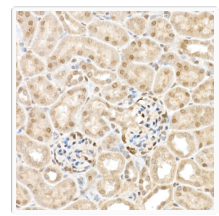
Western blot analysis of lysates from Mouse lung, using TAZ Rabbit pAb (STJ110501) at 1:500 dilution.  
 Secondary antibody: HRP-conjugated Goat anti-Rabbit IgG (H+L) (STJS000856) at 1:10000 dilution.  
 Lysates/proteins: 25 Mu g per lane.  
 Blocking buffer: 3% nonfat dry milk in TBST.  
 Detection: ECL Basic Kit  
 Exposure time: 30s.



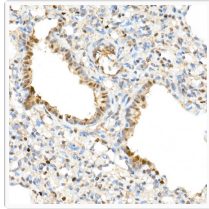
Western blot analysis of lysates from Rat lung, using TAZ Rabbit pAb (STJ110501) at 1:1000 dilution.  
 Secondary antibody: HRP-conjugated Goat anti-Rabbit IgG (H+L) (STJS000856) at 1:10000 dilution.  
 Lysates/proteins: 25 Mu g per lane.  
 Blocking buffer: 3% nonfat dry milk in TBST.  
 Detection: ECL Basic Kit  
 Exposure time: 180s.



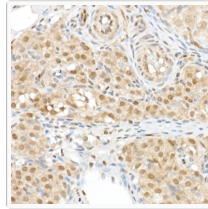
Immunohistochemistry analysis of paraffin-embedded Human placenta using TAZ Rabbit pAb (STJ110501) at dilution of 1:50 (40x lens). High pressure antigen retrieval performed with 0. 01M Citrate Bufferr (pH 6. 0) prior to immunohistochemistry staining.



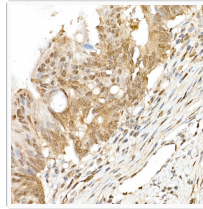
Immunohistochemistry analysis of paraffin-embedded Mouse kidney using TAZ Rabbit pAb (STJ110501) at dilution of 1:50 (40x lens). High pressure antigen retrieval performed with 0. 01M Citrate Bufferr (pH 6. 0) prior to immunohistochemistry staining.



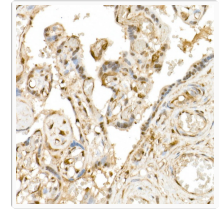
Immunohistochemistry analysis of paraffin-embedded Rat lung using TAZ Rabbit pAb (STJ110501) at dilution of 1:50 (40x lens). High pressure antigen retrieval performed with 0. 01M Citrate Bufferr (pH 6. 0) prior to immunohistochemistry staining.



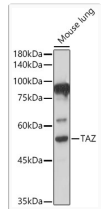
Immunohistochemistry analysis of paraffin-embedded Rat ovary using TAZ Rabbit pAb (STJ110501) at dilution of 1:50 (40x lens). High pressure antigen retrieval performed with 0. 01M Citrate Bufferr (pH 6. 0) prior to immunohistochemistry staining.



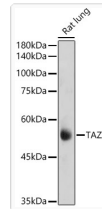
Immunohistochemistry analysis of paraffin-embedded Human colon carcinoma using TAZ Rabbit pAb (STJ110501) at dilution of 1:50 (40x lens). High pressure antigen retrieval performed with 0. 01M Citrate Bufferr (pH 6. 0) prior to immunohistochemistry staining.



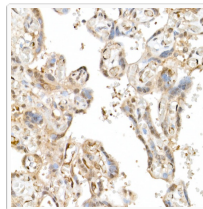
Immunohistochemistry analysis of paraffin-embedded Human placenta using TAZ Rabbit pAb (STJ110501) at dilution of 1:50 (40x lens). High pressure antigen retrieval performed with 0. 01M Citrate Bufferr (pH 6. 0) prior to immunohistochemistry staining.



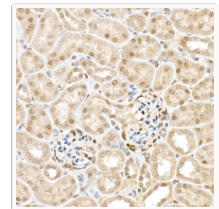
Western blot analysis of lysates from Mouse lung, using TAZ Rabbit pAb (STJ110501) at 1:500 dilution.  
 Secondary antibody: HRP-conjugated Goat anti-Rabbit IgG (H+L) (STJS000856) at 1:10000 dilution.  
 Lysates/proteins: 25 Mu g per lane.  
 Blocking buffer: 3% nonfat dry milk in TBST.  
 Detection: ECL Basic Kit  
 Exposure time: 30s.



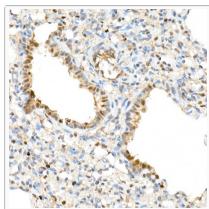
Western blot analysis of lysates from Rat lung, using TAZ Rabbit pAb (STJ110501) at 1:1000 dilution.  
 Secondary antibody: HRP-conjugated Goat anti-Rabbit IgG (H+L) (STJS000856) at 1:10000 dilution.  
 Lysates/proteins: 25 Mu g per lane.  
 Blocking buffer: 3% nonfat dry milk in TBST.  
 Detection: ECL Basic Kit  
 Exposure time: 180s.



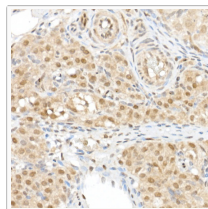
Immunohistochemistry analysis of paraffin-embedded Human placenta using TAZ Rabbit pAb (STJ110501) at dilution of 1:50 (40x lens). High pressure antigen retrieval performed with 0. 01M Citrate Bufferr (pH 6. 0) prior to immunohistochemistry staining.



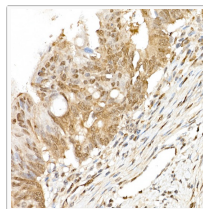
Immunohistochemistry analysis of paraffin-embedded Mouse kidney using TAZ Rabbit pAb (STJ110501) at dilution of 1:50 (40x lens). High pressure antigen retrieval performed with 0. 01M Citrate Bufferr (pH 6. 0) prior to immunohistochemistry staining.



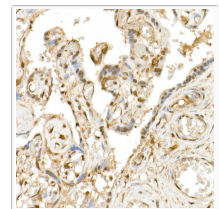
Immunohistochemistry analysis of paraffin-embedded Rat lung using TAZ Rabbit pAb (STJ110501) at dilution of 1:50 (40x lens). High pressure antigen retrieval performed with 0. 01M Citrate Bufferr (pH 6. 0) prior to immunohistochemistry staining.



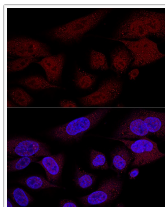
Immunohistochemistry analysis of paraffin-embedded Rat ovary using TAZ Rabbit pAb (STJ110501) at dilution of 1:50 (40x lens). High pressure antigen retrieval performed with 0. 01M Citrate Bufferr (pH 6. 0) prior to immunohistochemistry staining.



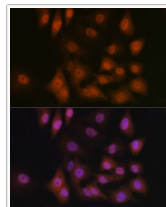
Immunohistochemistry analysis of paraffin-embedded Human colon carcinoma using TAZ Rabbit pAb (STJ110501) at dilution of 1:50 (40x lens). High pressure antigen retrieval performed with 0. 01M Citrate Bufferr (pH 6. 0) prior to immunohistochemistry staining.



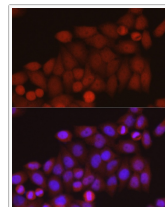
Immunohistochemistry analysis of paraffin-embedded Human placenta using TAZ Rabbit pAb (STJ110501) at dilution of 1:50 (40x lens). High pressure antigen retrieval performed with 0. 01M Citrate Bufferr (pH 6. 0) prior to immunohistochemistry staining.



Confocal immunofluorescence analysis of U2OS cells using TAZ Rabbit pAb (STJ110501) at dilution of 1:100 (60x lens). Blue: DAPI for nuclear staining.



Immunofluorescence analysis of A-549 cells using TAZ Rabbit pAb (STJ110501) at dilution of 1:100 (40x lens). Secondary antibody: Cy3-conjugated Goat anti-Rabbit IgG (H+L) (STJS001166) at 1:500 dilution. Blue: DAPI for nuclear staining.



Immunofluorescence analysis of HeLa cells using TAZ Rabbit pAb (STJ110501) at dilution of 1:50 (40x lens). Secondary antibody: Cy3-conjugated Goat anti-Rabbit IgG (H+L) (STJS001166) at 1:500 dilution. Blue: DAPI for nuclear staining.