

## Anti-MT-ATP6 antibody (209-226) (STJ110492)

### GENERAL INFORMATION

Product Type	Primary antibodies
Applications	WB/IHC-P/IF/ICC/ELISA
Host / Source	Rabbit
Reactivity	Human/Mouse

### PRODUCT PROPERTIES

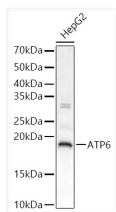
Clonality	Polyclonal
Concentration	Lot specific
Conjugation	Unconjugated
Purification	Affinity purification
Dilution Range	WB:1:500-1:2000 IHC-P:1:100-1:200 IF/ICC:1:50-1:200 ELISA:Recommended starting concentration is 1 µg/mL. Please optimize the concentration based on your specific assay requirements.
Formulation	PBS with 0.02% Sodium Azide, 50% Glycerol, pH7.3.
Isotype	IgG
Molecular Weight	Protein Mw: 25kDa Observed Mw: 20kDa
Storage Instruction	Store at -20°C for up to 1 year from the date of receipt, and avoid repeat freeze-thaw cycles.

### TARGET INFORMATION

Gene ID	<a href="#">17705</a>
Gene Symbol	<a href="#">Mtatp6</a>
UniProt ID	<a href="#">ATP6_MOUSE</a>
Immunogen Region	209-226
Immunogen Sequence	HFLPQGTPISLIPMLIIET ISLFIQPMALAVRLTANITA GHLLMHLIGGATLVLMNISP PTATITFIILLTILEFAV ALIQAYVFTLLVSLYLHDNT
Specificity	A synthetic peptide corresponding to a sequence within amino acids 127-226 of mouse ATP6 (NP_904333.1).

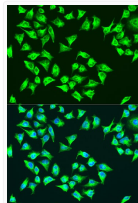
### ADDITIONAL INFORMATION

Note **STRICTLY FOR FURTHER SCIENTIFIC RESEARCH USE ONLY (RUO). MUST NOT TO BE USED IN DIAGNOSTIC OR THERAPEUTIC APPLICATIONS.**



Western blot analysis of lysates from HepG2 cells, using ATP6 Rabbit pAb (STJ110492) at 1:2000; 1:2000 dilution.  
Secondary antibody: HRP-conjugated Goat anti-Rabbit IgG (H+L) (STJS000856) at 1:10000 dilution.

Lysates/proteins: 25 µg per lane.  
Blocking buffer: 3% nonfat dry milk in TBST.  
Detection: ECL Basic Kit  
Exposure time: 20s.



Immunofluorescence analysis of U2OS cells using ATP6 Rabbit pAb (STJ110492) at dilution of 1:100. Secondary antibody: Cy3-conjugated Goat anti-Rabbit IgG (H+L) (STJS001166) at 1:500 dilution. Blue: DAPI for nuclear staining.