

Anti-Kdm6a antibody (550-700) (STJ110458)

GENERAL INFORMATION

Product Type	Primary antibodies
Applications	WB/IHC-P/ELISA
Host / Source	Rabbit
Reactivity	Human/Mouse/Rat

PRODUCT PROPERTIES

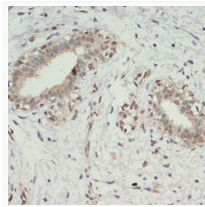
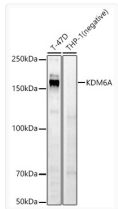
Clonality	Polyclonal
Concentration	Lot specific
Conjugation	Unconjugated
Purification	Affinity purification
Dilution Range	WB:1:500-1:1000 IHC-P:1:50-1:200 ELISA:Recommended starting concentration is 1 Mu g/mL. Please optimize the concentration based on your specific assay requirements.
Formulation	PBS with 0.09% Sodium Azide, 50% Glycerol, pH 7.3.
Isotype	IgG
Molecular Weight	Protein Mw: 154kDa/157kDa Observed Mw: 180kDa
Storage Instruction	Store at -20°C for up to 1 year from the date of receipt, and avoid repeat freeze-thaw cycles.

TARGET INFORMATION

Gene ID	22289
Gene Symbol	Kdm6a
UniProt ID	KDM6A_MOUSE
Immunogen Region	550-700
Immunogen Sequence	MPSVSQPGVHTACPRQTLAN GPFSAGHVPCSTSRTLGSTD TVLIGNNHVTGSGSNGNVPY LQRNAPTLPHNRTNLTSSTE EPWKNQLSNSTQGLHKGPS HLAGPNGERPLSSTGPSQHL QAAGSGIQNQNGHPTLPSNS VTQGAALNHLS
Specificity	Recombinant fusion protein containing a sequence corresponding to amino acids 550-700 of mouse KDM6A (NP_033509.1).

ADDITIONAL INFORMATION

Note **STRICTLY FOR FURTHER SCIENTIFIC RESEARCH USE ONLY (RUO). MUST NOT TO BE USED IN DIAGNOSTIC OR THERAPEUTIC APPLICATIONS.**



Western blot analysis of various lysates, using KDM6A Rabbit pAb (STJ110458) at 1:700 dilution.
 Secondary antibody: HRP-conjugated Goat anti-Rabbit IgG (H+L) (STJS000856) at 1:10000 dilution.
 Lysates/proteins: 25 Mu g per lane.
 Blocking buffer: 3% nonfat dry milk in TBST.
 Detection: ECL Basic Kit
 Exposure time: 60s.

Immunohistochemistry analysis of paraffin-embedded Human breast cancer using KDM6A Rabbit pAb (STJ110458) at dilution of 1:200 (40x lens). Microwave antigen retrieval performed with 0.01M PBS Buffer (pH 7.2) prior to immunohistochemistry staining.