

## Anti-SLC2A3 antibody (207-281) (STJ110449)

### GENERAL INFORMATION

Product Type	Primary antibodies
Applications	WB/IHC-P/ELISA
Host / Source	Rabbit
Reactivity	Human/Mouse/Rat

### PRODUCT PROPERTIES

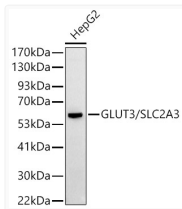
Clonality	Polyclonal
Concentration	Lot specific
Conjugation	Unconjugated
Purification	Affinity purification
Dilution Range	WB:1:100-1:500 IHC-P:1:50-1:200 ELISA:Recommended starting concentration is 1 µg/mL. Please optimize the concentration based on your specific assay requirements.
Formulation	PBS with 0.05% Proclin300, 50% Glycerol, pH 7.3.
Isotype	IgG
Molecular Weight	Protein Mw: 54kDa Observed Mw: 48-60kDa
Storage Instruction	Store at -20°C for up to 1 year from the date of receipt, and avoid repeat freeze-thaw cycles.

### TARGET INFORMATION

Gene ID	<a href="#">6515</a>
Gene Symbol	<a href="#">SLC2A3</a>
UniProt ID	<a href="#">GTR3_HUMAN</a>
Immunogen Region	207-281
Immunogen Sequence	ESPRFLLINRKEEENAKQIL QRLWGTQDVSQDIQEMKDES ARMSQEKQVTVLELFRVSSY RQPIIISIVLQLSQQ
Specificity	Recombinant fusion protein containing a sequence corresponding to amino acids 207-281 of human GLUT3/SLC2A3 (NP_008862.1).

### ADDITIONAL INFORMATION

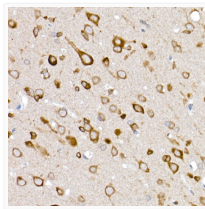
Note **STRICTLY FOR FURTHER SCIENTIFIC RESEARCH USE ONLY (RUO). MUST NOT TO BE USED IN DIAGNOSTIC OR THERAPEUTIC APPLICATIONS.**



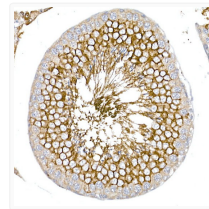
Western blot analysis of lysates from HepG2 cells, using GLUT3/SLC2A3 Rabbit pAb (STJ110449) at 1:500 dilution.

Secondary antibody: HRP-conjugated Goat anti-Rabbit IgG (H+L) (STJS000856) at 1:10000 dilution.

Lysates/proteins: 25 µg per lane.  
 Blocking buffer: 3% nonfat dry milk in TBST.  
 Detection: ECL Basic Kit  
 Exposure time: 90s.



Immunohistochemistry analysis of paraffin-embedded Rat brain using GLUT3/SLC2A3 Rabbit pAb (STJ110449) at dilution of 1:50 (40x lens). High pressure antigen retrieval performed with 0.01M Citrate Bufferr (pH 6.0) prior to immunohistochemistry staining.



Immunohistochemistry analysis of paraffin-embedded Rat testis using GLUT3/SLC2A3 Rabbit pAb (STJ110449) at dilution of 1:50 (40x lens). High pressure antigen retrieval performed with 0.01M Citrate Bufferr (pH 6.0) prior to immunohistochemistry staining.