

Anti-POR antibody (1-250) (STJ110441)

GENERAL INFORMATION

Product Type	Primary antibodies
Applications	WB/IHC-P/IF/ICC/ELISA
Host / Source	Rabbit
Reactivity	Human/Mouse/Rat

PRODUCT PROPERTIES

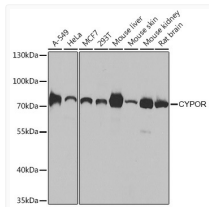
Clonality	Polyclonal
Concentration	Lot specific
Conjugation	Unconjugated
Purification	Affinity purification
Dilution Range	WB:1:500-1:2000 IHC-P:1:50-1:100 IF/ICC:1:50-1:200 ELISA:Recommended starting concentration is 1 µg/mL. Please optimize the concentration based on your specific assay requirements.
Formulation	PBS with 0.02% Sodium Azide, 50% Glycerol, pH 7.3.
Isotype	IgG
Molecular Weight	Protein Mw: 77kDa Observed Mw: 77kDa
Storage Instruction	Store at -20°C for up to 1 year from the date of receipt, and avoid repeat freeze-thaw cycles.

TARGET INFORMATION

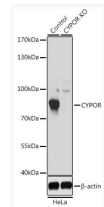
Gene ID	5447
Gene Symbol	POR
UniProt ID	NCPR_HUMAN
Immunogen Region	1-250
Immunogen Sequence	MINMGDSHVDTSSVSEAVA EEVSLFSMTDMILFSLIVGL LTYWFLFRKKKEEVPEFTKI QTLTSSVRESSFVEKMKKTG RNIIVFYGSQTGTAEFANR LSKDAHRYGMRGMSADPEEY DLADLSSLPEIDNALVFCM ATYGECDPTDNAQDFYDWLQ ETDVDLSGVKFAVFGGLGKNT YEHFNAMGKYVDKRLQLGA QRIFELGLGDDDDNLEEDFI TWREQFWPAVCEHFGVEAT
Specificity	Recombinant fusion protein containing a sequence corresponding to amino acids 1-250 of human CYPOR (NP_000932.3).

ADDITIONAL INFORMATION

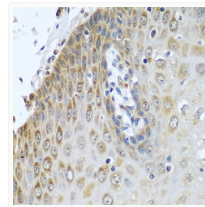
Note STRICTLY FOR FURTHER SCIENTIFIC RESEARCH USE ONLY (RUO). MUST NOT TO BE USED IN DIAGNOSTIC OR THERAPEUTIC APPLICATIONS.



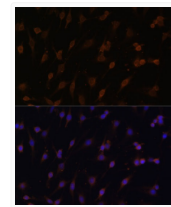
Western blot analysis of various lysates using [KO Validated] CYPOR Rabbit pAb (STJ110441) at 1:1000 dilution.
Secondary antibody: HRP-conjugated Goat anti-Rabbit IgG (H+L) (STJS000856) at 1:10000 dilution.
Lysates/proteins: 25 µg per lane.
Blocking buffer: 3% nonfat dry milk in TBST.
Detection: ECL Basic Kit
Exposure time: 5s.



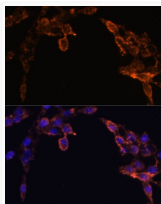
Western blot analysis of lysates from wild type (WT) and CYPOR knockout (KO) HeLa cells, using [KO Validated] CYPOR Rabbit pAb (STJ110441) at 1:1000 dilution.
Secondary antibody: HRP-conjugated Goat anti-Rabbit IgG (H+L) (STJS000856) at 1:10000 dilution.
Lysates/proteins: 25 µg per lane.
Blocking buffer: 3% nonfat dry milk in TBST.
Detection: ECL Basic Kit
Exposure time: 1s.



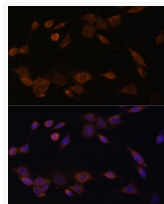
Immunohistochemistry analysis of paraffin-embedded Human esophagus using [KO Validated] CYPOR Rabbit pAb (STJ110441) at dilution of 1:100 (40x lens). Microwave antigen retrieval performed with 0.01M PBS Buffer (pH 7.2) prior to immunohistochemistry staining.



Immunofluorescence analysis of C6 cells using [KO Validated] CYPOR Rabbit pAb (STJ110441) at dilution of 1:100 (40x lens). Secondary antibody: Cy3-conjugated Goat anti-Rabbit IgG (H+L) (STJS001166) at 1:500 dilution. Blue: DAPI for nuclear staining.



Immunofluorescence analysis of HeLa cells using [KO Validated] CYPOR Rabbit pAb (STJ110441) at dilution of 1:100 (40x lens). Secondary antibody: Cy3-conjugated Goat anti-Rabbit IgG (H+L) (STJS001166) at 1:500 dilution. Blue: DAPI for nuclear staining.



Immunofluorescence analysis of NIH-3T3 cells using [KO Validated] CYPOR Rabbit pAb (STJ110441) at dilution of 1:100 (40x lens). Secondary antibody: Cy3-conjugated Goat anti-Rabbit IgG (H+L) (STJS001166) at 1:500 dilution. Blue: DAPI for nuclear staining.