

Anti-ABCC6 antibody (830-940) (STJ110399)

GENERAL INFORMATION

Product Type	Primary antibodies
Applications	WB/ELISA
Host / Source	Rabbit
Reactivity	Mouse/Rat

PRODUCT PROPERTIES

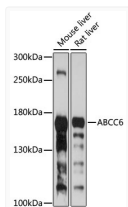
Clonality	Polyclonal
Concentration	Lot specific
Conjugation	Unconjugated
Purification	Affinity purification
Dilution Range	WB:1:500-1:2000 ELISA:Recommended starting concentration is 1 Mu g/mL. Please optimize the concentration based on your specific assay requirements.
Formulation	PBS with 0.01% Thimerosal, 50% Glycerol, pH 7.3.
Isotype	IgG
Molecular Weight	Protein Mw: 165kDa Observed Mw: 164kDa
Storage Instruction	Store at -20°C for up to 1 year from the date of receipt, and avoid repeat freeze-thaw cycles.

TARGET INFORMATION

Gene ID	368
Gene Symbol	ABCC6
UniProt ID	MRP6_HUMAN
Immunogen Region	830-940
Immunogen Sequence	AIAEMGSYQELLQRKGALVC LLDQARQPGDRGEGETEPGT STKDPRGTSAGRRPELRER SIKSVPEKDRTTSEAQTEVP LDDPDRAGWPAGKDSIQYGR VKATVHLAYLR
Specificity	Recombinant fusion protein containing a sequence corresponding to amino acids 830-940 of human ABCC6 (NP_001162.4).

ADDITIONAL INFORMATION

Note STRICTLY FOR FURTHER SCIENTIFIC RESEARCH USE ONLY (RUO). MUST NOT TO BE USED IN DIAGNOSTIC OR THERAPEUTIC APPLICATIONS.



Western blot analysis of various lysates using ABCC6 Rabbit pAb (STJ110399) at 1:1000 dilution.

Secondary antibody: HRP-conjugated Goat anti-Rabbit IgG (H+L) (STJS000856) at 1:10000 dilution.

Lysates/proteins: 25 Mu g per lane.

Blocking buffer: 3% nonfat dry milk in TBST.

Detection: ECL Basic Kit

Exposure time: 30s.