

## Anti-ACRV1 antibody (22-265) (STJ110397)

### GENERAL INFORMATION

Product Type	Primary antibodies
Applications	WB/ELISA
Host / Source	Rabbit
Reactivity	Rat

### PRODUCT PROPERTIES

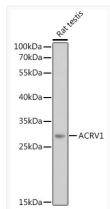
Clonality	Polyclonal
Concentration	Lot specific
Conjugation	Unconjugated
Purification	Affinity purification
Dilution Range	WB:1:500-1:2000 ELISA:Recommended starting concentration is 1 Mu g/mL. Please optimize the concentration based on your specific assay requirements.
Formulation	PBS with 0.02% Sodium Azide, 50% Glycerol, pH 7.3.
Isotype	IgG
Molecular Weight	Protein Mw: 28kDa Observed Mw: 28kDa
Storage Instruction	Store at -20°C for up to 1 year from the date of receipt, and avoid repeat freeze-thaw cycles.

### TARGET INFORMATION

Gene ID	<a href="#">56</a>
Gene Symbol	<a href="#">ACRV1</a>
UniProt ID	<a href="#">ASPX_HUMAN</a>
Immunogen Region	22-265
Immunogen Sequence	QPNELSGSIDHQTSVQQLPG EFFSLENPSDAEALYETSSG LNTLSEHGSSSEHGSSKHTVA EHTSGEHAESEHASGEPAAE EHAEGEHTVGEQPSGEQPSG EHLSGEQPLSELESGEQPSD EQPSGEHSGEQPSGEQASG EQPSGEHASGEQASGAPISS TSTGTILNCYTCAYMNDQGK CLRGEGTCITQNSQQCMLKK IFEGGKLFQFMVQGCENMCPS MNLFSHGTRMQICCRNQS
Specificity	Recombinant fusion protein containing a sequence corresponding to amino acids 22-265 of human ACRV1 (NP_001603.1).

### ADDITIONAL INFORMATION

Note **STRICTLY FOR FURTHER SCIENTIFIC RESEARCH USE ONLY (RUO). MUST NOT TO BE USED IN DIAGNOSTIC OR THERAPEUTIC APPLICATIONS.**



Western blot analysis of lysates from Rat testis, using ACRV1 Rabbit pAb (STJ110397) at 1:1000 dilution.

Secondary antibody: HRP-conjugated Goat anti-Rabbit IgG (H+L) (STJS000856) at 1:10000 dilution.

Lysates/proteins: 25 Mu g per lane.

Blocking buffer: 3% nonfat dry milk in TBST.

Detection: ECL Basic Kit

Exposure time: 30s.