

## Anti-Gm13125 antibody (67-274) (STJ110394)

### GENERAL INFORMATION

|               |                    |
|---------------|--------------------|
| Product Type  | Primary antibodies |
| Applications  | WB/IHC-P/ELISA     |
| Host / Source | Rabbit             |
| Reactivity    | Human/Mouse/Rat    |

### PRODUCT PROPERTIES

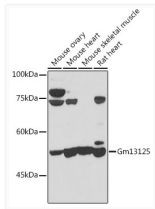
|                     |  |
|---------------------|--|
| Clonality           | Polyclonal   |
| Concentration       | Lot specific   |
| Conjugation         | Unconjugated   |
| Purification        | Affinity purification  |
| Dilution Range      | WB:1:500-1:2000<br>IHC-P:1:50-1:200<br>ELISA:Recommended starting concentration is 1 µg/mL. Please optimize the concentration based on your specific assay requirements. |
| Formulation         | PBS with 0.02% Sodium Azide, 50% Glycerol, pH 7.3.   |
| Isotype             | IgG  |
| Molecular Weight    | Protein Mw: 55kDa<br>Observed Mw: 55kDa  |
| Storage Instruction | Store at -20°C for up to 1 year from the date of receipt, and avoid repeat freeze-thaw cycles.   |

### TARGET INFORMATION

|                    |  |
|--------------------|--|
| Gene ID            | <a href="#">645425</a>   |
| Gene Symbol        | <a href="#">PRAMEF20</a>   |
| UniProt ID         | <a href="#">PRA20_HUMAN</a>  |
| Immunogen Region   | 67-274   |
| Immunogen Sequence | GALKKRTPYLETQLQVVLEE VDKLLIQEVHPREYKLEVLD LRSVGQNYLNVWPGAMDDWL<br>PKTKTQDPCCSKTVMTQPLK VLVDLQLNRRGQSRLFSYLV QWSDRRKGLLQLYCNKLIW<br>SPSQQNYRKLSQKVNLDYVE TLGLHSSCSPSFLNFAPYL RQMRNLRKALSNIREEHII<br>SPEKRRCIITRFTLQILKLE SLQKLHLD |
| Specificity        | Recombinant fusion protein containing a sequence corresponding to amino acids 67-274 of mouse Gm13125 (NP_001108549.1).  |

### ADDITIONAL INFORMATION

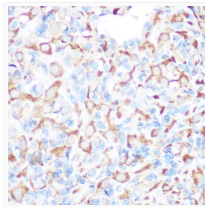
Note STRICTLY FOR FURTHER SCIENTIFIC RESEARCH USE ONLY (RUO). MUST NOT TO BE USED IN DIAGNOSTIC OR THERAPEUTIC APPLICATIONS.



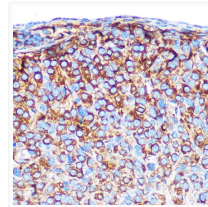
Western blot analysis of various lysates using Gm13125 Rabbit pAb (STJ110394) at 1:1000 dilution.

Secondary antibody: HRP-conjugated Goat anti-Rabbit IgG (H+L) (STJS000856) at 1:10000 dilution.

Lysates/proteins: 25 µg per lane.  
Blocking buffer: 3% nonfat dry milk in TBST.  
Detection: ECL Basic Kit  
Exposure time: 30s.



Immunohistochemistry analysis of paraffin-embedded Rat ovary using Gm13125 Rabbit pAb (STJ110394) at dilution of 1:100 (40x lens). Microwave antigen retrieval performed with 0.01M Tris/EDTA Buffer (pH 9.0) prior to immunohistochemistry staining.



Immunohistochemistry analysis of paraffin-embedded Mouse ovary using Gm13125 Rabbit pAb (STJ110394) at dilution of 1:100 (40x lens). Microwave antigen retrieval performed with 0.01M Tris/EDTA Buffer (pH 9.0) prior to immunohistochemistry staining.