

Anti-CKMT2 antibody (40-230) (STJ110388)

GENERAL INFORMATION

Product Type	Primary antibodies
Applications	WB/ELISA
Host / Source	Rabbit
Reactivity	Human/Mouse/Rat

PRODUCT PROPERTIES

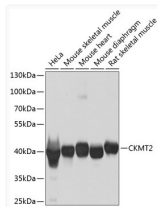
Clonality	Polyclonal
Concentration	Lot specific
Conjugation	Unconjugated
Purification	Affinity purification
Dilution Range	WB:1:500-1:2000 ELISA:Recommended starting concentration is 1 Mu g/mL. Please optimize the concentration based on your specific assay requirements.
Formulation	PBS with 0.02% Sodium Azide, 50% Glycerol, pH 7.3.
Isotype	IgG
Molecular Weight	Protein Mw: 48kDa Observed Mw: 40kDa
Storage Instruction	Store at-20°C for up to 1 year from the date of receipt, and avoid repeat freeze-thaw cycles.

TARGET INFORMATION

Gene ID	1160
Gene Symbol	CKMT2
UniProt ID	KCRS_HUMAN
Immunogen Region	40-230
Immunogen Sequence	EVREQPRLFPPSADYPDLRK HNNCMAECLTPAIYAKLRNK VTPNGYTLDQCIQTGVDNPG HPFIKTVGMVAGDEESYEVF ADLFDVPVILRHNHYDPRVM KHTTDL DASKITQGFDEHY VLSSRVRTGRSIRGLSLPPA CTRAEERREVENVAITALEGL KGDLAGRYKLSMTEQDQQ RLIDDHFLFDK
Specificity	Recombinant fusion protein containing a sequence corresponding to amino acids 40-230 of human CKMT2 (NP_001816.2).

ADDITIONAL INFORMATION

Note STRICTLY FOR FURTHER SCIENTIFIC RESEARCH USE ONLY (RUO). MUST NOT TO BE USED IN DIAGNOSTIC OR THERAPEUTIC APPLICATIONS.



Western blot analysis of various lysates using CKMT2 Rabbit pAb (STJ110388) at 1:1000 dilution.

Secondary antibody: HRP-conjugated Goat anti-Rabbit IgG (H+L) (STJS000856) at 1:10000 dilution.

Lysates/proteins: 25 Mu g per lane.
 Blocking buffer: 3% nonfat dry milk in TBST.
 Detection: ECL Basic Kit
 Exposure time: 1s.