

Anti-DDIT4 antibody (1-232) (STJ110386)

GENERAL INFORMATION

Product Type	Primary antibodies
Applications	WB/ELISA
Host / Source	Rabbit
Reactivity	Human

PRODUCT PROPERTIES

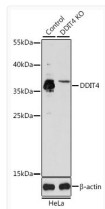
Clonality	Polyclonal
Concentration	Lot specific
Conjugation	Unconjugated
Purification	Affinity purification
Dilution Range	WB:1:500-1:1000 ELISA:Recommended starting concentration is 1 Mu g/mL. Please optimize the concentration based on your specific assay requirements.
Formulation	PBS with 0.02% Sodium Azide, 50% Glycerol, pH 7.3.
Isotype	IgG
Molecular Weight	Protein Mw: 25kDa Observed Mw: 32kDa
Storage Instruction	Store at -20°C for up to 1 year from the date of receipt, and avoid repeat freeze-thaw cycles.

TARGET INFORMATION

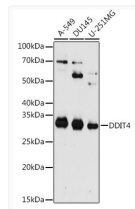
Gene ID	54541
Gene Symbol	DDIT4
UniProt ID	DDIT4_HUMAN
Immunogen Region	1-232
Immunogen Sequence	MPSLWDRFSSSSTSSSPSSL PRTPTPDRPPRSAWGSATRE EGFDRTSLESDDCESLDSS NSGFGPEEDTAYLDGVSLPD FELLSDPEDEHLCANLMQLL QESLAQARLGSRPARLLMP SQLVSVQVGKELLRLAYSEPC GLRGALLDVCVEQGKSCSHV QQLALDPSLVPTFQLTLVLR LDSRLWPKIQGLFSSANSFP LPGFSQSLTLSTGFRVIKKK LYSSEQLLIEEC
Specificity	Recombinant fusion protein containing a sequence corresponding to amino acids 1-232 of human DDIT4 (NP_061931.1).

ADDITIONAL INFORMATION

Note **STRICTLY FOR FURTHER SCIENTIFIC RESEARCH USE ONLY (RUO). MUST NOT TO BE USED IN DIAGNOSTIC OR THERAPEUTIC APPLICATIONS.**



Western blot analysis of lysates from wild type (WT) and DDIT4 knockout (KO) HeLa cells, using [KO Validated] DDIT4 Rabbit pAb (STJ110386) at 1:1000 dilution.
 Secondary antibody: HRP-conjugated Goat anti-Rabbit IgG (H+L) (STJS000856) at 1:10000 dilution.
 Lysates/proteins: 25 Mu g per lane.
 Blocking buffer: 3% nonfat dry milk in TBST.
 Detection: ECL Enhanced Kit
 Exposure time: 90s.



Western blot analysis of various lysates using [KO Validated] DDIT4 Rabbit pAb (STJ110386) at 1:1000 dilution.
 Secondary antibody: HRP-conjugated Goat anti-Rabbit IgG (H+L) (STJS000856) at 1:10000 dilution.
 Lysates/proteins: 25 Mu g per lane.
 Blocking buffer: 3% nonfat dry milk in TBST.
 Detection: ECL Enhanced Kit
 Exposure time: 180s.