

Anti-NEDD4L antibody (836-955) (STJ110385)

GENERAL INFORMATION

Product Type	Primary antibodies
Applications	WB/IHC-P/IF/ICC/ELISA
Host / Source	Rabbit
Reactivity	Human/Mouse/Rat

PRODUCT PROPERTIES

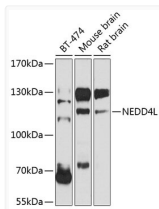
Clonality	Polyclonal
Concentration	Lot specific
Conjugation	Unconjugated
Purification	Affinity purification
Dilution Range	WB:1:500-1:2000 IHC-P:1:50-1:200 IF/ICC:1:50-1:200 ELISA:Recommended starting concentration is 1 Mu g/mL. Please optimize the concentration based on your specific assay requirements.
Formulation	PBS with 0.09% Sodium Azide, 50% Glycerol, pH 7.3.
Isotype	IgG
Molecular Weight	Protein Mw: 112kDa Observed Mw: 113kDa
Storage Instruction	Store at -20°C for up to 1 year from the date of receipt, and avoid repeat freeze-thaw cycles.

TARGET INFORMATION

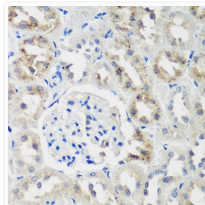
Gene ID	23327
Gene Symbol	NEDD4L
UniProt ID	NED4L_HUMAN
Immunogen Region	836-955
Immunogen Sequence	GDVDVNDWRQHSIYKNGYCP NHPVIQWFWKAVLLMDAEKR IRLIQFVTGTSRVP MNGFAE LYGSNGPQLFTIEQWGSPEK LPRAHTCFNRLDLPYETFE DLREKLLMAVENAQQFEGVD
Specificity	Recombinant fusion protein containing a sequence corresponding to amino acids 836-955 of human NEDD4L (NP_056092.2).

ADDITIONAL INFORMATION

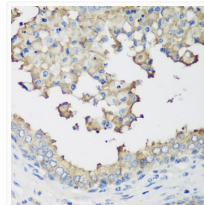
Note **STRICTLY FOR FURTHER SCIENTIFIC RESEARCH USE ONLY (RUO). MUST NOT TO BE USED IN DIAGNOSTIC OR THERAPEUTIC APPLICATIONS.**



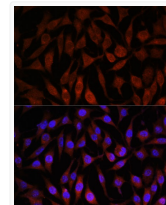
Western blot analysis of various lysates using NEDD4L Rabbit pAb (STJ110385) at 1:1000 dilution.
 Secondary antibody: HRP-conjugated Goat anti-Rabbit IgG (H+L) (STJS000856) at 1:10000 dilution.
 Lysates/proteins: 25 Mu g per lane.
 Blocking buffer: 3% nonfat dry milk in TBST.
 Detection: ECL Basic Kit
 Exposure time: 90s.



Immunohistochemistry analysis of paraffin-embedded Rat kidney using NEDD4L Rabbit pAb (STJ110385) at dilution of 1:200 (40x lens).
 Microwave antigen retrieval performed with 0.01M PBS Buffer (pH 7.2) prior to immunohistochemistry staining.



Immunohistochemistry analysis of paraffin-embedded Human prostate using NEDD4L Rabbit pAb (STJ110385) at dilution of 1:200 (40x lens).
 Microwave antigen retrieval performed with 0.01M PBS Buffer (pH 7.2) prior to immunohistochemistry staining.



Immunofluorescence analysis of L929 cells using NEDD4L Rabbit pAb (STJ110385) at dilution of 1:100. Secondary antibody: Cy3-conjugated Goat anti-Rabbit IgG (H+L) (STJS001166) at 1:500 dilution. Blue: DAPI for nuclear staining.