

Anti-HSD11B2 antibody (266-405) (STJ110380)

GENERAL INFORMATION

Product Type	Primary antibodies
Applications	WB/ELISA
Host / Source	Rabbit
Reactivity	Human/Rat

PRODUCT PROPERTIES

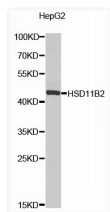
Clonality	Polyclonal
Concentration	Lot specific
Conjugation	Unconjugated
Purification	Affinity purification
Dilution Range	WB:1:200-1:1000 ELISA:Recommended starting concentration is 1 µg/mL. Please optimize the concentration based on your specific assay requirements.
Formulation	PBS with 0.02% Sodium Azide, 50% Glycerol, pH 7.3.
Isotype	IgG
Molecular Weight	Protein Mw: 44kDa Observed Mw: 44kDa
Storage Instruction	Store at -20°C for up to 1 year from the date of receipt, and avoid repeat freeze-thaw cycles.

TARGET INFORMATION

Gene ID	3291
Gene Symbol	HSD11B2
UniProt ID	DHI2_HUMAN
Immunogen Region	266-405
Immunogen Sequence	KTESVRNVGQWEKRRKQLLLA NLPQELLQAYGKDYIEHLHG QFLHSLRLAMSDLTPVVDAL TDALLAARPRRRYYPGQLG LMYFIHYLLPEGLRRRFLQA FFISHCLPRALQPGQPGTTP PQAAQDPNLSPGPSPAVAR
Specificity	Recombinant fusion protein containing a sequence corresponding to amino acids 266-405 of human HSD11B2 (NP_000187.3).

ADDITIONAL INFORMATION

Note STRICTLY FOR FURTHER SCIENTIFIC RESEARCH USE ONLY (RUO). MUST NOT TO BE USED IN DIAGNOSTIC OR THERAPEUTIC APPLICATIONS.



Western blot analysis of lysates from HepG2 cells, using HSD11B2 Rabbit pAb (STJ110380) at 1:1000 dilution.

Secondary antibody: HRP-conjugated Goat anti-Rabbit IgG (H+L) (STJS000856) at 1:10000 dilution.

Lysates/proteins: 25 µg per lane.

Blocking buffer: 3% nonfat dry milk in TBST.

Detection: ECL Enhanced Kit

Exposure time: 15s.