

Anti-ADAMTSL1 antibody (1483-1762) (STJ110376)

GENERAL INFORMATION

Product Type	Primary antibodies
Applications	WB/ELISA
Host / Source	Rabbit
Reactivity	Human/Mouse/Rat

PRODUCT PROPERTIES

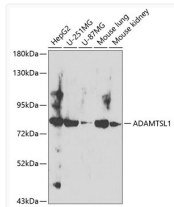
Clonality	Polyclonal
Concentration	Lot specific
Conjugation	Unconjugated
Purification	Affinity purification
Dilution Range	WB:1:500-1:2000 ELISA:Recommended starting concentration is 1 µg/mL. Please optimize the concentration based on your specific assay requirements.
Formulation	PBS with 0.02% Sodium Azide, 50% Glycerol, pH 7.3.
Isotype	IgG
Molecular Weight	Protein Mw: 62kDa Observed Mw: 80kDa
Storage Instruction	Store at -20°C for up to 1 year from the date of receipt, and avoid repeat freeze-thaw cycles.

TARGET INFORMATION

Gene ID	92949
Gene Symbol	ADAMTSL1
UniProt ID	ATL1_HUMAN
Immunogen Region	1483-1762
Immunogen Sequence	SLVIQDYWWSVDRLATCSAS CGNRGVQQPRLRCLLNSTEV NPAHCAGKVRPAVQPIACNR RDCPSRWMVTSWSACTRSCG GGVQTRRVTCQKCLKASGIST PVSNDMCTQVAKRPVDTQAC NQQLCVEWAFSSWGQCNGPC IGPHLAVQHRQVFCQTRDGI TLPSEQCSALPRPVSTQNCW SEACSVHWRVSLWTLCTATC GNYGFQSRREVCVHARTNKA VPEHLCSWGPSPANWQRCN
Specificity	Recombinant fusion protein containing a sequence corresponding to amino acids 1483-1762 of human ADAMTSL1 (NP_001035362.3).

ADDITIONAL INFORMATION

Note **STRICTLY FOR FURTHER SCIENTIFIC RESEARCH USE ONLY (RUO). MUST NOT TO BE USED IN DIAGNOSTIC OR THERAPEUTIC APPLICATIONS.**



Western blot analysis of various lysates using ADAMTSL1 Rabbit pAb (STJ110376) at 1:400 dilution.

Secondary antibody: HRP-conjugated Goat anti-Rabbit IgG (H+L) (STJS000856) at 1:10000 dilution.

Lysates/proteins: 25 µg per lane.

Blocking buffer: 3% nonfat dry milk in TBST.

Detection: ECL Basic Kit

Exposure time: 20s.