

Anti-SETD3 antibody (1-100) (STJ110374)

GENERAL INFORMATION

Product Type	Primary antibodies
Applications	WB/ELISA
Host / Source	Rabbit
Reactivity	Human/Mouse

PRODUCT PROPERTIES

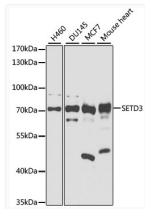
Clonality	Polyclonal
Concentration	Lot specific
Conjugation	Unconjugated
Purification	Affinity purification
Dilution Range	WB:1:500-1:200 ELISA:Recommended starting concentration is 1 µg/mL. Please optimize the concentration based on your specific assay requirements.
Formulation	PBS with 0.02% Sodium Azide, 50% Glycerol, pH 7.3.
Isotype	IgG
Molecular Weight	Protein Mw: 67kDa Observed Mw: 70kDa
Storage Instruction	Store at -20°C for up to 1 year from the date of receipt, and avoid repeat freeze-thaw cycles.

TARGET INFORMATION

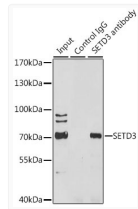
Gene ID	84193
Gene Symbol	SETD3
UniProt ID	SETD3_HUMAN
Immunogen Region	1-100
Immunogen Sequence	MGKKSrvkTQKSGTGATATV SPKEILNLTSELLQKCSSPA PGPgKEWEEYVQIRTLVEKI RKKQKGLSVTFDGKREDYFP DLMKWASENGASVEGFEMVN
Specificity	A synthetic peptide corresponding to a sequence within amino acids 1-100 of human SETD3 (NP_115609.2).

ADDITIONAL INFORMATION

Note **STRICTLY FOR FURTHER SCIENTIFIC RESEARCH USE ONLY (RUO). MUST NOT TO BE USED IN DIAGNOSTIC OR THERAPEUTIC APPLICATIONS.**



Western blot analysis of extracts of various cell lines, using SETD3 antibody (STJ110374) at 1:1000 dilution. Secondary antibody: HRP Goat Anti-rabbit IgG (H+L) at 1:10000 dilution. Lysates/proteins: 25µg per lane. Blocking buffer: 3% nonfat dry milk in TBST. Detection: ECL Basic Kit. Exposure time: 30s.



Immunoprecipitation analysis of 200µg extracts of HeLa cells, using 3 µg SETD3 antibody (STJ110374). Western blot was performed from the immunoprecipitate using SETD3 antibody (STJ110374) at a dilution of 1:1000.