

## Anti-STX7 antibody (1-170) (STJ110360)

### GENERAL INFORMATION

Product Type	Primary antibodies
Applications	WB/IHC-P/ELISA
Host / Source	Rabbit
Reactivity	Human/Mouse/Rat

### PRODUCT PROPERTIES

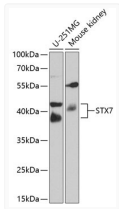
Clonality	Polyclonal
Concentration	Lot specific
Conjugation	Unconjugated
Purification	Affinity purification
Dilution Range	WB:1:500-1:2000 IHC-P:1:50-1:200 ELISA:Recommended starting concentration is 1 Mu g/mL. Please optimize the concentration based on your specific assay requirements.
Formulation	PBS with 0.02% Sodium Azide, 50% Glycerol, pH 7.3.
Isotype	IgG
Molecular Weight	Protein Mw: 30kDa Observed Mw: 40kDa
Storage Instruction	Store at -20°C for up to 1 year from the date of receipt, and avoid repeat freeze-thaw cycles.

### TARGET INFORMATION

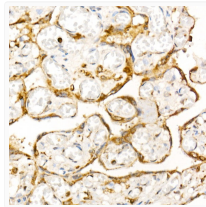
Gene ID	<a href="#">8417</a>
Gene Symbol	<a href="#">STX7</a>
UniProt ID	<a href="#">STX7_HUMAN</a>
Immunogen Region	1-170
Immunogen Sequence	MSYTPGVGGDPAQLAQRIS N I Q K I T Q C S V E I Q R T L N Q L G T P Q D S P E L R Q Q L Q Q K Q Q Y T N Q L A K E T D K Y I K E F G S L P T T P S E Q R Q R K I Q K D R L V A E F T T S L T N F Q K V Q R Q A A E R E K E F V A R V R A S S R V S G S F P E D S S K E R N L V S W E S Q T Q P Q V Q V Q D E E I T E D D L R L I H E
Specificity	Recombinant fusion protein containing a sequence corresponding to amino acids 1-170 of human STX7 (NP_003560.2).

### ADDITIONAL INFORMATION

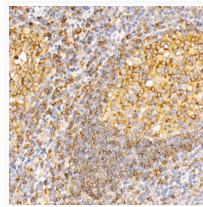
Note **STRICTLY FOR FURTHER SCIENTIFIC RESEARCH USE ONLY (RUO). MUST NOT TO BE USED IN DIAGNOSTIC OR THERAPEUTIC APPLICATIONS.**



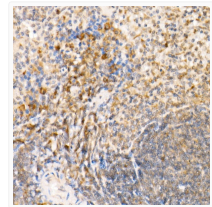
Western blot analysis of various lysates using STX7 Rabbit pAb (STJ110360) at 1:1000 dilution. Secondary antibody: HRP-conjugated Goat anti-Rabbit IgG (H+L) (STJS000856) at 1:10000 dilution. Lysates/proteins: 25 Mu g per lane. Blocking buffer: 3% nonfat dry milk in TBST. Detection: ECL Basic Kit. Exposure time: 90s.



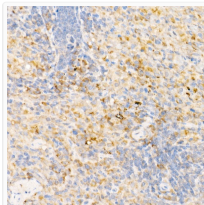
Immunohistochemistry analysis of paraffin-embedded Human placenta using STX7 Rabbit pAb (STJ110360) at dilution of 1:100 (40x lens). Microwave antigen retrieval performed with 0.01M PBS Buffer (pH 7.2) prior to immunohistochemistry staining.



Immunohistochemistry analysis of paraffin-embedded Human tonsil using STX7 Rabbit pAb (STJ110360) at dilution of 1:100 (40x lens). Microwave antigen retrieval performed with 0.01M PBS Buffer (pH 7.2) prior to immunohistochemistry staining.



Immunohistochemistry analysis of paraffin-embedded Mouse spleen using STX7 Rabbit pAb (STJ110360) at dilution of 1:100 (40x lens). Microwave antigen retrieval performed with 0.01M PBS Buffer (pH 7.2) prior to immunohistochemistry staining.



Immunohistochemistry analysis of paraffin-embedded Rat spleen using STX7 Rabbit pAb (STJ110360) at dilution of 1:100 (40x lens). Microwave antigen retrieval performed with 0.01M PBS Buffer (pH 7.2) prior to immunohistochemistry staining.