

Anti-HMGCL antibody (1-325) (STJ110355)

GENERAL INFORMATION

Product Type	Primary antibodies
Applications	WB/IHC-P/ELISA
Host / Source	Rabbit
Reactivity	Human/Mouse/Rat

PRODUCT PROPERTIES

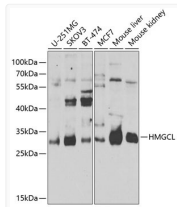
Clonality	Polyclonal
Concentration	Lot specific
Conjugation	Unconjugated
Purification	Affinity purification
Dilution Range	WB:1:500-1:2000 IHC-P:1:50-1:200 ELISA:Recommended starting concentration is 1 µg/mL. Please optimize the concentration based on your specific assay requirements.
Formulation	PBS with 0.02% Sodium Azide, 50% Glycerol, pH 7.3.
Isotype	IgG
Molecular Weight	Protein Mw: 34kDa Observed Mw: 30kDa
Storage Instruction	Store at -20°C for up to 1 year from the date of receipt, and avoid repeat freeze-thaw cycles.

TARGET INFORMATION

Gene ID	3155
Gene Symbol	HMGCL
UniProt ID	HMGCL_HUMAN
Immunogen Region	1-325
Immunogen Sequence	MAAMRKALPRRLVGLASLRA VSTSSMGTLPKRVKIVEVGP RDGLQNEKNIVSTPVKIKLI DMLSEAGLSVIETTSFVSPK WVPQMGDHTVLKGIQKFPG INYPVLTPLNKGFEAAVAAG AKEVVIFGAASELFTKKNIN CSIEESFQRFDAILKAAQSA NISVRGYVSCALGCPYEGKI SPAKVAEVTKKFYSMGCYEI SLGDTIGVGTGPGIMKDMLSA VMQEVPLAALAVHCHDITYG
Specificity	Recombinant fusion protein containing a sequence corresponding to amino acids 1-325 of human HMGCL (NP_000182.2).

ADDITIONAL INFORMATION

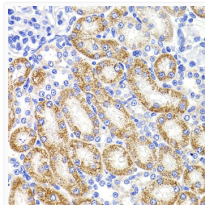
Note STRICTLY FOR FURTHER SCIENTIFIC RESEARCH USE ONLY (RUO). MUST NOT TO BE USED IN DIAGNOSTIC OR THERAPEUTIC APPLICATIONS.



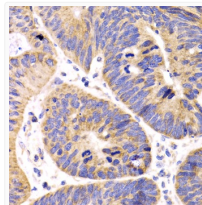
Western blot analysis of various lysates using HMGCL Rabbit pAb (STJ110355) at 1:1000 dilution.

Secondary antibody: HRP-conjugated Goat anti-Rabbit IgG (H+L) (STJS000856) at 1:10000 dilution.

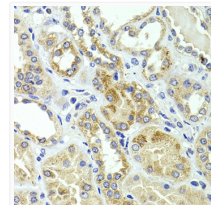
Lysates/proteins: 25 µg per lane.
Blocking buffer: 3% nonfat dry milk in TBST.
Detection: ECL Enhanced Kit
Exposure time: 15s.



Immunohistochemistry analysis of paraffin-embedded Rat kidney using HMGCL Rabbit pAb (STJ110355) at dilution of 1:100 (40x lens).
Microwave antigen retrieval performed with 0.01M PBS Buffer (pH 7.2) prior to immunohistochemistry staining.



Immunohistochemistry analysis of paraffin-embedded Human colon carcinoma using HMGCL Rabbit pAb (STJ110355) at dilution of 1:100 (40x lens).
Microwave antigen retrieval performed with 0.01M PBS Buffer (pH 7.2) prior to immunohistochemistry staining.



Immunohistochemistry analysis of paraffin-embedded Human kidney using HMGCL Rabbit pAb (STJ110355) at dilution of 1:100 (40x lens).
Microwave antigen retrieval performed with 0.01M PBS Buffer (pH 7.2) prior to immunohistochemistry staining.