

Anti-CALCOCO1 antibody (462-691) (STJ110294)

GENERAL INFORMATION

Product Type	Primary antibodies
Applications	WB/ELISA
Host / Source	Rabbit
Reactivity	Human/Mouse

PRODUCT PROPERTIES

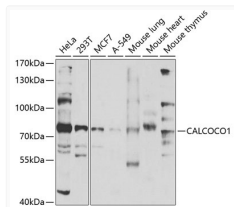
Clonality	Polyclonal
Concentration	Lot specific
Conjugation	Unconjugated
Purification	Affinity purification
Dilution Range	WB:1:500-1:2000 ELISA:Recommended starting concentration is 1 Mu g/mL. Please optimize the concentration based on your specific assay requirements.
Formulation	PBS with 0.02% Sodium Azide, 50% Glycerol, pH 7.3.
Isotype	IgG
Molecular Weight	Protein Mw: 77kDa Observed Mw: 77kDa
Storage Instruction	Store at -20°C for up to 1 year from the date of receipt, and avoid repeat freeze-thaw cycles.

TARGET INFORMATION

Gene ID	57658
Gene Symbol	CALCOCO1
UniProt ID	CACO1_HUMAN
Immunogen Region	462-691
Immunogen Sequence	LVQLSESKRELTELRSLRV LQKEKEQLQEEKQELLEMYR KLEARLEKVADEKWNEDATT EDEEAAVGLSCPAALTDSED ESPEDMRLPPYGLCERGDGP SSPAGPREASPLVVISQPAP ISPHLSGPAEDSSDSEAEDEKSVLMAAVQSGGEEANLLL PELGSAFYDMASGFTVGTLS ETSTGGPATPTWKECPICKE RFPAESDKDALEDHMDGHFF FSTQDPFTFE
Specificity	Recombinant fusion protein containing a sequence corresponding to amino acids 462-691 of human CALCOCO1 (NP_065949.1).

ADDITIONAL INFORMATION

Note **STRICTLY FOR FURTHER SCIENTIFIC RESEARCH USE ONLY (RUO). MUST NOT TO BE USED IN DIAGNOSTIC OR THERAPEUTIC APPLICATIONS.**



Western blot analysis of various lysates using CALCOCO1 Rabbit pAb (STJ110294) at 1:1000 dilution. Secondary antibody: HRP-conjugated Goat anti-Rabbit IgG (H+L) (STJS000856) at 1:10000 dilution. Lysates/proteins: 25 Mu g per lane. Blocking buffer: 3% nonfat dry milk in TBST. Detection: ECL Enhanced Kit Exposure time: 90s.