

## Anti-UCHL5 antibody (1-328) (STJ110285)

### GENERAL INFORMATION

Product Type	Primary antibodies
Applications	WB/IHC-P/IF/ICC/ELISA
Host / Source	Rabbit
Reactivity	Human/Mouse/Rat

### PRODUCT PROPERTIES

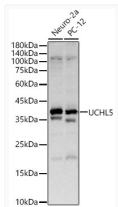
Clonality	Polyclonal
Concentration	Lot specific
Conjugation	Unconjugated
Purification	Affinity purification
Dilution Range	WB:1:500-1:1000 IHC-P:1:50-1:200 IF/ICC:1:50-1:200 ELISA:Recommended starting concentration is 1 Mu g/mL. Please optimize the concentration based on your specific assay requirements.
Formulation	PBS with 0.05% Proclin300, 50% Glycerol, pH7.3.
Isotype	IgG
Molecular Weight	Protein Mw: 38kDa Observed Mw: 38kDa
Storage Instruction	Store at -20°C for up to 1 year from the date of receipt, and avoid repeat freeze-thaw cycles.

### TARGET INFORMATION

Gene ID	<a href="#">51377</a>
Gene Symbol	<a href="#">UCHL5</a>
UniProt ID	<a href="#">UCHL5_HUMAN</a>
Immunogen Region	1-328
Immunogen Sequence	MTGNAGEWCLMESDPGVFTE LIKGFGCRGAQVEEIWSLEP ENFEKLPVHGLIFLFWQP GEEPAGSVVQDSRLDTIFFA QVINNACATQAIIVSLLNC THQDVHLGETLSEFKEFSQS FDAAMKGLALSNSDVIQVH NSFARQQMFEFDTKTSAKEE DAFHFVSYVVPVNGRLYELDG LREGPIDLGACNQDDWISAV RPVIEKRIQKYSEGEIRFNL MAIVSDRKMIYEQKIAELQ
Specificity	Recombinant fusion protein containing a sequence corresponding to amino acids 1-328 of human UCHL5 (NP_001186190.1).

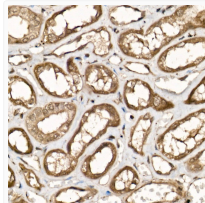
### ADDITIONAL INFORMATION

Note STRICTLY FOR FURTHER SCIENTIFIC RESEARCH USE ONLY (RUO). MUST NOT TO BE USED IN DIAGNOSTIC OR THERAPEUTIC APPLICATIONS.

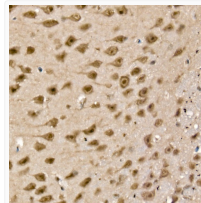


Western blot analysis of various lysates, using UCHL5 Rabbit pAb (STJ110285) at 1:400 dilution. Secondary antibody: HRP-conjugated Goat anti-Rabbit IgG (H+L) (STJS000856) at 1:10000 dilution.

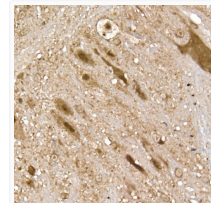
Lysates/proteins: 25 Mu g per lane.  
Blocking buffer: 3% nonfat dry milk in TBST.  
Detection: ECL Basic Kit  
Exposure time: 15s.



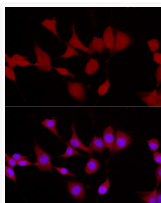
Immunohistochemistry analysis of paraffin-embedded Human kidney using UCHL5 Rabbit pAb (STJ110285) at dilution of 1:50 (40x lens). High pressure antigen retrieval performed with 0.01M Citrate Bufferr (pH 6.0) prior to immunohistochemistry staining.



Immunohistochemistry analysis of paraffin-embedded Mouse brain using UCHL5 Rabbit pAb (STJ110285) at dilution of 1:50 (40x lens). High pressure antigen retrieval performed with 0.01M Citrate Bufferr (pH 6.0) prior to immunohistochemistry staining.



Immunohistochemistry analysis of paraffin-embedded Rat brain using UCHL5 Rabbit pAb (STJ110285) at dilution of 1:50 (40x lens). High pressure antigen retrieval performed with 0.01M Citrate Bufferr (pH 6.0) prior to immunohistochemistry staining.



Immunofluorescence analysis of NIH/3T3 cells using UCHL5 Rabbit pAb (STJ110285) at dilution of 1:50 (40x lens). Secondary antibody: Cy3-conjugated Goat anti-Rabbit IgG (H+L) (STJS001166) at 1:500 dilution. Blue: DAPI for nuclear staining.