

Anti-ACSL6 antibody (383-622) (STJ110272)

GENERAL INFORMATION

Product Type	Primary antibodies
Applications	WB/ELISA
Host / Source	Rabbit
Reactivity	Human/Mouse/Rat

PRODUCT PROPERTIES

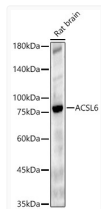
Clonality	Polyclonal
Concentration	Lot specific
Conjugation	Unconjugated
Purification	Affinity purification
Dilution Range	WB:1:500-1:2000 ELISA:Recommended starting concentration is 1 µg/mL. Please optimize the concentration based on your specific assay requirements.
Formulation	PBS with 0.02% Sodium Azide, 50% Glycerol, pH 7.3.
Isotype	IgG
Molecular Weight	Protein Mw: 78kDa Observed Mw: 77kDa
Storage Instruction	Store at -20°C for up to 1 year from the date of receipt, and avoid repeat freeze-thaw cycles.

TARGET INFORMATION

Gene ID	23305
Gene Symbol	ACSL6
UniProt ID	ACSL6_HUMAN
Immunogen Region	383-622
Immunogen Sequence	YGQTECTAGCTFTTPGDWTS GHVGAPLPCNHIKLV DVEEL NYWACKGEGEICVRGPNVFK GYLKDPDRKKEALDSDGWLH TGDIGKWLPAAGTLKIDRKK HIFKLAQGEYVAPEKIENIY IRSQPVAQIYVHGDSLKAFV VGIVVPDPEVMP SWAQKRG I EGTYADLCTNKDLKKAILED MVR LGKESGLHSFEQVKAIH IHS DMFSVQNGLLTPTLKAK RPELREYFKKQIEELYSIS
Specificity	Recombinant fusion protein containing a sequence corresponding to amino acids 383-622 of human ACSL6 (NP_001192180.1).

ADDITIONAL INFORMATION

Note STRICTLY FOR FURTHER SCIENTIFIC RESEARCH USE ONLY (RUO). MUST NOT TO BE USED IN DIAGNOSTIC OR THERAPEUTIC APPLICATIONS.



Western blot analysis of lysates from Rat brain, using ACSL6 Rabbit pAb (STJ110272) at 1:2000 dilution.

Secondary antibody: HRP-conjugated Goat anti-Rabbit IgG (H+L) (STJS000856) at 1:10000 dilution.

Lysates/proteins: 25 µg per lane.

Blocking buffer: 3% nonfat dry milk in TBST.

Detection: ECL Enhanced Kit

Exposure time: 60s.