

Anti-ERP29 antibody (33-261) (STJ110266)

GENERAL INFORMATION

Product Type	Primary antibodies
Applications	WB/IHC-P/IF/ICC/ELISA
Host / Source	Rabbit
Reactivity	Human/Mouse/Rat

PRODUCT PROPERTIES

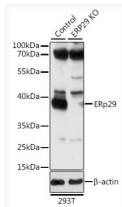
Clonality	Polyclonal
Concentration	Lot specific
Conjugation	Unconjugated
Purification	Affinity purification
Dilution Range	WB:1:500-1:2000 IHC-P:1:50-1:200 IF/ICC:1:50-1:200 ELISA:Recommended starting concentration is 1 µg/mL. Please optimize the concentration based on your specific assay requirements.
Formulation	PBS with 0.02% Sodium Azide, 50% Glycerol, pH 7.3.
Isotype	IgG
Molecular Weight	Protein Mw: 29kDa Observed Mw: 29kDa
Storage Instruction	Store at -20°C for up to 1 year from the date of receipt, and avoid repeat freeze-thaw cycles.

TARGET INFORMATION

Gene ID	10961
Gene Symbol	ERP29
UniProt ID	ERP29_HUMAN
Immunogen Region	33-261
Immunogen Sequence	LHTKGALPLDVTYFYKVIK SKFVLVKFDTQYPYGEKQDE FKRLAENSASSD DLLVAEVG ISDYGDKLNME LSEKYKLDK ESYPVFYLFRDGD FENPVVY TGAVKVGAIQRWLKGGGVYL GMPGCLPVYDALAGEFIRAS GVEARQALLKQGQDNLSSVK ETQKKWAEQYLKIMGKILDQ GEDFPASEMTRIARLIEKNK MSDGKKEELQKSLNLTAFQ KKGAEKEEL
Specificity	Recombinant fusion protein containing a sequence corresponding to amino acids 33-261 of human ERp29 (NP_006808.1).

ADDITIONAL INFORMATION

Note STRICTLY FOR FURTHER SCIENTIFIC RESEARCH USE ONLY (RUO). MUST NOT TO BE USED IN DIAGNOSTIC OR THERAPEUTIC APPLICATIONS.



Western blot analysis of various lysates using ERp29 Rabbit pAb (STJ110266) at 1:1000 dilution.

Secondary antibody: HRP-conjugated Goat anti-Rabbit IgG (H+L) (STJS000856) at 1:10000 dilution.

Lysates/ proteins: 25 µg per lane.

Blocking buffer: 3% nonfat dry milk in TBST.

Detection: ECL Basic Kit

Exposure time: 1s.