

Anti-MTX2 antibody (1-263) (STJ110265)

GENERAL INFORMATION

Product Type	Primary antibodies
Applications	WB/IF/ICC/ELISA
Host / Source	Rabbit
Reactivity	Human/Mouse/Rat

PRODUCT PROPERTIES

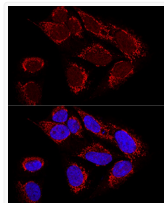
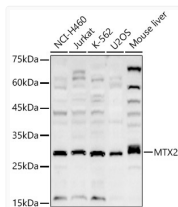
Clonality	Polyclonal
Concentration	Lot specific
Conjugation	Unconjugated
Purification	Affinity purification
Dilution Range	WB:1:1000-1:5000 IF/CC:1:50-1:200 ELISA:Recommended starting concentration is 1 μ g/mL. Please optimize the concentration based on your specific assay requirements.
Formulation	PBS with 0.02% Sodium Azide, 50% Glycerol, pH 7.3.
Isotype	IgG
Molecular Weight	Protein Mw: 30kDa Observed Mw: 29kDa
Storage Instruction	Store at -20°C for up to 1 year from the date of receipt, and avoid repeat freeze-thaw cycles.

TARGET INFORMATION

Gene ID	10651
Gene Symbol	MTX2
UniProt ID	MTX2_HUMAN
Immunogen Region	1-263
Immunogen Sequence	MSLVAEAFVSIQIAAAEPWPE NATLYQQLKGEQILLSDNAA SLAVQAFLOMGNLPIKVVCR ANAEYMSPSGKVPFIHVGNG VVSELGPVQFVKAKGHSLS DGLEEVQKAEMKAYMELVNN MLLTAELYLQWCDEATVGEI THARYGSPYPWPLNHILAYQ KQWEVKRKMKAIGWGKKTLD QVLEDVDQCCQALSQRLLGTQ PYFFNKQPTELDALVFGHLY TILTTQLTNDLSEKVKNY
Specificity	Recombinant fusion protein containing a sequence corresponding to amino acids 1-263 of human MTX2 (NP_006545.1).

ADDITIONAL INFORMATION

Note STRICTLY FOR FURTHER SCIENTIFIC RESEARCH USE ONLY (RUO). MUST NOT TO BE USED IN DIAGNOSTIC OR THERAPEUTIC APPLICATIONS.



Western blot analysis of various lysates, using MTX2 Rabbit pAb (STJ110265) at 1:2000 dilution. Secondary antibody: HRP-conjugated Goat anti-Rabbit IgG (H+L) (STJS000856) at 1:10000 dilution.

Lysates/proteins: 25 μ g per lane.
Blocking buffer: 3% nonfat dry milk in TBST.
Detection: ECL Basic Kit
Exposure time: 180s.

Confocal immunofluorescence analysis of U2OS cells using MTX2 Rabbit pAb (STJ110265) at dilution of 1:100. Blue: DAPI for nuclear staining.