

Anti-ARHGEF11 antibody (1-100) (STJ110263)

GENERAL INFORMATION

Product Type	Primary antibodies
Applications	WB/IHC-P/ELISA
Host / Source	Rabbit
Reactivity	Human/Mouse

PRODUCT PROPERTIES

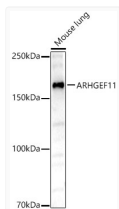
Clonality	Polyclonal
Concentration	Lot specific
Conjugation	Unconjugated
Purification	Affinity purification
Dilution Range	WB:1:500-1:1000 IHC-P:1:50-1:100 ELISA:Recommended starting concentration is 1 µg/mL. Please optimize the concentration based on your specific assay requirements.
Formulation	PBS with 0.02% Sodium Azide, 50% Glycerol, pH 7.3.
Isotype	IgG
Molecular Weight	Protein Mw: 168kDa Observed Mw: 168kDa
Storage Instruction	Store at -20°C for up to 1 year from the date of receipt, and avoid repeat freeze-thaw cycles.

TARGET INFORMATION

Gene ID	9826
Gene Symbol	ARHGEF11
UniProt ID	ARHGB_HUMAN
Immunogen Region	1-100
Immunogen Sequence	MSVRLPQSIDRLSSLSSLDG SAPERKSPSHHRQPSDASET TGLVQRCVVIQKQDQHGFGFT VSGDRIVLVQSVRPGGAAMK AGVKEGDRIIKVNGTMTNS
Specificity	A synthetic peptide corresponding to a sequence within amino acids 1-100 of human ARHGEF11 (O15085).

ADDITIONAL INFORMATION

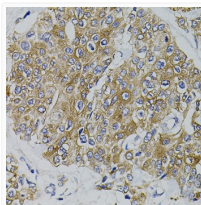
Note STRICTLY FOR FURTHER SCIENTIFIC RESEARCH USE ONLY (RUO). MUST NOT TO BE USED IN DIAGNOSTIC OR THERAPEUTIC APPLICATIONS.



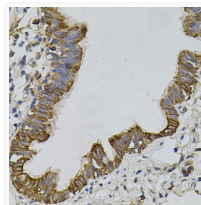
Western blot analysis of lysates from Mouse lung, using ARHGEF11 Rabbit pAb (STJ110263) at 1:600 dilution.

Secondary antibody: HRP-conjugated Goat anti-Rabbit IgG (H+L) (STJS000856) at 1:10000 dilution.

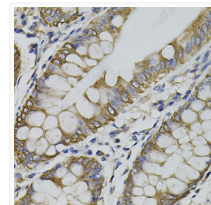
Lysates/proteins: 25 µg per lane.
Blocking buffer: 3% nonfat dry milk in TBST.
Detection: ECL Basic Kit
Exposure time: 180s.



Immunohistochemistry analysis of paraffin-embedded Human prostate cancer using ARHGEF11 Rabbit pAb (STJ110263) (40x lens). Microwave antigen retrieval performed with 0.01M PBS Buffer (pH 7.2) prior to immunohistochemistry staining.



Immunohistochemistry analysis of paraffin-embedded Human lung using ARHGEF11 Rabbit pAb (STJ110263) (40x lens). Microwave antigen retrieval performed with 0.01M PBS Buffer (pH 7.2) prior to immunohistochemistry staining.



Immunohistochemistry analysis of paraffin-embedded Human colon using ARHGEF11 Rabbit pAb (STJ110263) (40x lens). Microwave antigen retrieval performed with 0.01M PBS Buffer (pH 7.2) prior to immunohistochemistry staining.