

Anti-KDM4A antibody (585-815) (STJ110262)

GENERAL INFORMATION

Product Type	Primary antibodies
Applications	WB/IHC-P/IP/ELISA
Host / Source	Rabbit
Reactivity	Human/Mouse

PRODUCT PROPERTIES

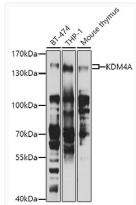
Clonality	Polyclonal
Concentration	Lot specific
Conjugation	Unconjugated
Purification	Affinity purification
Dilution Range	WB:1:500-1:2000 IHC-P:1:50-1:200 IP:0.5 Mu g-4 Mu g antibody for 200 Mu g-400 Mu g extracts of whole cells ELISA:Recommended starting concentration is 1 Mu g/mL. Please optimize the concentration based on your specific assay requirements.
Formulation	PBS with 0.02% Sodium Azide, 50% Glycerol, pH 7.3.
Isotype	IgG
Molecular Weight	Protein Mw: 121kDa Observed Mw: 150kDa
Storage Instruction	Store at -20°C for up to 1 year from the date of receipt, and avoid repeat freeze-thaw cycles.

TARGET INFORMATION

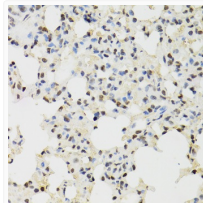
Gene ID	9682
Gene Symbol	KDM4A
UniProt ID	KDM4A_HUMAN
Immunogen Region	585-815
Immunogen Sequence	FSLEENKSKGRRQPLSKLP RHHPVLVQECVSDDETSEQL TPEEEAEETEAWAKPLSQLW QNRPPNFEAEKEFNETMAQQ APHCAVCMIFQTYHQVEFGG FNQNCGNASDLAPQKQRTKP LIPEMCFTSTGCSTDINLST PYLEEDGTSILVSKKCSVR VHASCYGVPPAKASEDWMCS RCSANALEEDCCLCSLRGGA LQRANDDRWVHVSCAVAL E ARFVNI AERSP
Specificity	Recombinant fusion protein containing a sequence corresponding to amino acids 585-815 of human KDM4A (NP_055478.2).

ADDITIONAL INFORMATION

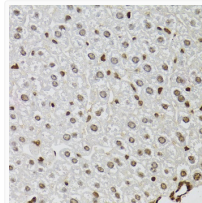
Note STRICTLY FOR FURTHER SCIENTIFIC RESEARCH USE ONLY (RUO). MUST NOT TO BE USED IN DIAGNOSTIC OR THERAPEUTIC APPLICATIONS.



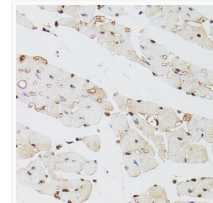
Western blot analysis of various lysates using KDM4A Rabbit pAb (STJ110262) at 1:1000 dilution.
Secondary antibody: HRP-conjugated Goat anti-Rabbit IgG (H+L) (STJS000856) at 1:10000 dilution.
Lysates/proteins: 25 Mu g per lane.
Blocking buffer: 3% nonfat dry milk in TBST.
Detection: ECL Basic Kit
Exposure time: 90s.



Immunohistochemistry analysis of paraffin-embedded Mouse lung using KDM4A Rabbit pAb (STJ110262) at dilution of 1:100 (40x lens).
Microwave antigen retrieval performed with 0.01M PBS Buffer (pH 7.2) prior to immunohistochemistry staining.



Immunohistochemistry analysis of paraffin-embedded Mouse liver using KDM4A Rabbit pAb (STJ110262) at dilution of 1:100 (40x lens).
Microwave antigen retrieval performed with 0.01M PBS Buffer (pH 7.2) prior to immunohistochemistry staining.



Immunohistochemistry analysis of paraffin-embedded Mouse heart using KDM4A Rabbit pAb (STJ110262) at dilution of 1:100 (40x lens).
Microwave antigen retrieval performed with 0.01M PBS Buffer (pH 7.2) prior to immunohistochemistry staining.