

Anti-FUBP3 antibody (65-260) (STJ110257)

GENERAL INFORMATION

Product Type	Primary antibodies
Applications	WB/ELISA
Host / Source	Rabbit
Reactivity	Human/Mouse

PRODUCT PROPERTIES

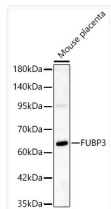
Clonality	Polyclonal
Concentration	Lot specific
Conjugation	Unconjugated
Purification	Affinity purification
Dilution Range	WB:1:500-1:2000 ELISA:Recommended starting concentration is 1 µg/mL. Please optimize the concentration based on your specific assay requirements.
Formulation	PBS with 0.02% Sodium Azide, 50% Glycerol, pH 7.3.
Isotype	IgG
Molecular Weight	Protein Mw: 62kDa Observed Mw: 64kDa
Storage Instruction	Store at -20°C for up to 1 year from the date of receipt, and avoid repeat freeze-thaw cycles.

TARGET INFORMATION

Gene ID	8939
Gene Symbol	FUBP3
UniProt ID	FUBP3_HUMAN
Immunogen Region	65-260
Immunogen Sequence	GNQLGALVHQRVTITEEFKV PDKMVGFIIGRGGEQISRQ AESGCKIQIASESSGIPERP CVLTGTPESEIQAQRLLGQI VDRCRNGPGFHNIDSNSTI QEILIPASKVGLVIGRGGET IKQLQERTGVKMVMIQDGPL PTGADKPLRITGDAFKVQQA REMVLEIIREKQDQDFRGVR GDFNSRMGGGSIEVSV
Specificity	Recombinant fusion protein containing a sequence corresponding to amino acids 65-260 of human FUBP3 (NP_003925.1).

ADDITIONAL INFORMATION

Note **STRICTLY FOR FURTHER SCIENTIFIC RESEARCH USE ONLY (RUO). MUST NOT TO BE USED IN DIAGNOSTIC OR THERAPEUTIC APPLICATIONS.**



Western blot analysis of lysates from Mouse placenta, using FUBP3 Rabbit pAb (STJ110257) at 1:400 dilution.

Secondary antibody: HRP-conjugated Goat anti-Rabbit IgG (H+L) (STJS000856) at 1:10000 dilution.

Lysates/proteins: 25 µg per lane.

Blocking buffer: 3% nonfat dry milk in TBST.

Detection: ECL Basic Kit

Exposure time: 90s.