

Anti-SSX4 antibody (70-188) (STJ110238)

GENERAL INFORMATION

Product Type	Primary antibodies
Applications	WB/ELISA
Host / Source	Rabbit
Reactivity	Human/Mouse

PRODUCT PROPERTIES

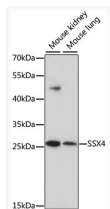
Clonality	Polyclonal
Concentration	Lot specific
Conjugation	Unconjugated
Purification	Affinity purification
Dilution Range	WB:1:500-1:2000 ELISA:Recommended starting concentration is 1 µg/mL. Please optimize the concentration based on your specific assay requirements.
Formulation	PBS with 0.01% Thimerosal, 50% Glycerol, pH 7.3.
Isotype	IgG
Molecular Weight	Protein Mw: 22kDa Observed Mw: 27kDa
Storage Instruction	Store at -20°C for up to 1 year from the date of receipt, and avoid repeat freeze-thaw cycles.

TARGET INFORMATION

Gene ID	548313/6759
Gene Symbol	SSX4.SSX4B
UniProt ID	SSX4_HUMAN
Immunogen Region	70-188
Immunogen Sequence	FMRSKRAADFHGNDGNDNRN HRNQVERPQMTFGSLQRIFP KIMPKKPAEEENGLKEVPEA SGPQNDGKQLCPPGNPSTLE KINKTSGPKRGKHAWTHRLR ERKQLVYEEISDPEDDE
Specificity	Recombinant fusion protein containing a sequence corresponding to amino acids 70-188 of human SSX4 (NP_005627.1).

ADDITIONAL INFORMATION

Note STRICTLY FOR FURTHER SCIENTIFIC RESEARCH USE ONLY (RUO). MUST NOT TO BE USED IN DIAGNOSTIC OR THERAPEUTIC APPLICATIONS.



Western blot analysis of various lysates using SSX4 Rabbit pAb (STJ110238) at 1:10000 dilution.
 Secondary antibody: HRP-conjugated Goat anti-Rabbit IgG (H+L) (STJS000856) at 1:10000 dilution.
 Lysates/proteins: 25 µg per lane.
 Blocking buffer: 3% nonfat dry milk in TBST.
 Detection: ECL Enhanced Kit
 Exposure time: 90s.