

Anti-PRSS2 antibody (24-247) (STJ110232)

GENERAL INFORMATION

Product Type	Primary antibodies
Applications	WB/ELISA
Host / Source	Rabbit
Reactivity	Human/Mouse

PRODUCT PROPERTIES

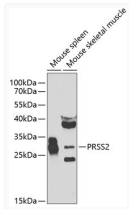
Clonality	Polyclonal
Concentration	Lot specific
Conjugation	Unconjugated
Purification	Affinity purification
Dilution Range	WB:1:500-1:2000 ELISA:Recommended starting concentration is 1 µg/mL. Please optimize the concentration based on your specific assay requirements.
Formulation	PBS with 0.02% Sodium Azide, 50% Glycerol, pH 7.3.
Isotype	IgG
Molecular Weight	Protein Mw: 26kDa Observed Mw: 26kDa
Storage Instruction	Store at -20°C for up to 1 year from the date of receipt, and avoid repeat freeze-thaw cycles.

TARGET INFORMATION

Gene ID	5645
Gene Symbol	PRSS2
UniProt ID	TRY2_HUMAN
Immunogen Region	24-247
Immunogen Sequence	IVGGYICEENSVPYQVSLNS GYHFCGGSLISEQWVVSAGH CYKSRIQVRLGEHNIEVLEG NEQFINAAKIIIRHPKYNSRT LDNDILLIKLSSPAVINSRV SAISLPTAPPAAGTESLISG WGNTLSSGADYPDELQCLDA PVLSQAECEASYPGKITNNM FCVGFLEGGKDCSQGDSGGP VVSNGELQGIVSWGYGCAQK NRPGVYTKVYNYVDWIKDTI AANS
Specificity	Recombinant fusion protein containing a sequence corresponding to amino acids 24-247 of human PRSS2 (NP_002761.1).

ADDITIONAL INFORMATION

Note **STRICTLY FOR FURTHER SCIENTIFIC RESEARCH USE ONLY (RUO). MUST NOT TO BE USED IN DIAGNOSTIC OR THERAPEUTIC APPLICATIONS.**



Western blot analysis of various lysates using PRSS2 Rabbit pAb (STJ110232) at 1:1000 dilution.
 Secondary antibody: HRP-conjugated Goat anti-Rabbit IgG (H+L) (STJS000856) at 1:10000 dilution.
 Lysates/proteins: 25 µg per lane.
 Blocking buffer: 3% nonfat dry milk in TBST.
 Detection: ECL Basic Kit
 Exposure time: 90s.