

Anti-NCAM1 antibody (759-858) (STJ110222)

GENERAL INFORMATION

Product Type	Primary antibodies
Applications	WB/IHC-P/IF/ICC/ELISA
Host / Source	Rabbit
Reactivity	Human/Mouse/Rat

PRODUCT PROPERTIES

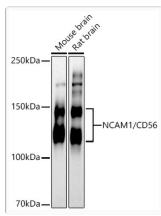
Clonality	Polyclonal
Concentration	Lot specific
Conjugation	Unconjugated
Purification	Affinity purification
Dilution Range	WB:1:500-1:1000 IHC-P:1:50-1:200 IF/ICC:1:50-1:200 ELISA:Recommended starting concentration is 1 µg/mL. Please optimize the concentration based on your specific assay requirements.
Formulation	PBS with 0.09% Sodium Azide, 50% Glycerol, pH7.3.
Isotype	IgG
Molecular Weight	Protein Mw: 95kDa Observed Mw: 120-220kDa/
Storage Instruction	Store at -20°C for up to 1 year from the date of receipt, and avoid repeat freeze-thaw cycles.

TARGET INFORMATION

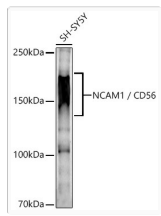
Gene ID	4684
Gene Symbol	NCAM1
UniProt ID	NCAM1_HUMAN
Immunogen Region	759-858
Immunogen Sequence	LCGKAGPGAKGKDMEEGKAA FSKDESKEPIVEVRTEEERT PNHGDKKHTPEPNETTPLTEP EKGPVEAKPECQETETKPAP AEVKTVPNDATQTKENESKA
Specificity	Recombinant fusion protein containing a sequence corresponding to amino acids 759-858 of human NCAM1/CD56 (NP_851996.2).

ADDITIONAL INFORMATION

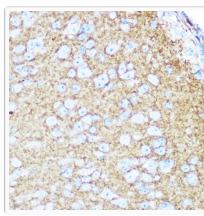
Note	STRICTLY FOR FURTHER SCIENTIFIC RESEARCH USE ONLY (RUO). MUST NOT TO BE USED IN DIAGNOSTIC OR THERAPEUTIC APPLICATIONS.
------	---



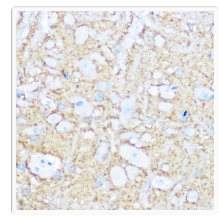
Western blot analysis of various lysates using NCAM1/CD56 Rabbit pAb (STJ110222) at 1:500 dilution.
 Secondary antibody: HRP-conjugated Goat anti-Rabbit IgG (H+L) (STJS000856) at 1:10000 dilution.
 Lysates/ proteins: 25 Mu g per lane.
 Blocking buffer: 3 % nonfat dry milk in TBST.
 Detection: ECL Basic Kit
 Exposure time: 90s.



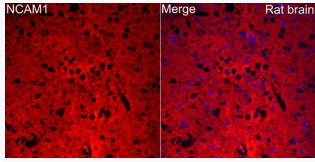
Western blot analysis of lysates from SH-SY5Y cells using NCAM1/CD56 Rabbit pAb (STJ110222) at 1:500 dilution.
 Secondary antibody: HRP-conjugated Goat anti-Rabbit IgG (H+L) (STJS000856) at 1:10000 dilution.
 Lysates/proteins: 25 Mu g per lane.
 Blocking buffer: 3% nonfat dry milk in TBST.
 Detection: ECL Enhanced Kit
 Exposure time: 90s.



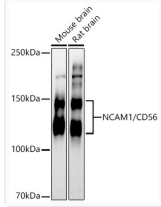
Immunohistochemistry analysis of paraffin-embedded Mouse brain tissue using NCAM1/CD56 Rabbit pAb (STJ110222) at a dilution of 1:100 (40x lens). Microwave antigen retrieval was performed with 0.01 M Tris-EDTA buffer (pH 9.0) prior to immunohistochemistry staining.



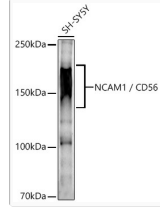
Immunohistochemistry analysis of paraffin-embedded Rat brain tissue using NCAM1/CD56 Rabbit pAb (STJ110222) at a dilution of 1:100 (40x lens). Microwave antigen retrieval was performed with 0.01 M Tris-EDTA buffer (pH 9.0) prior to immunohistochemistry staining.



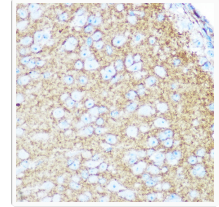
Immunofluorescence analysis of rat brain cells using NCAM1/CD56 Rabbit pAb (STJ110222) at dilution of 1:20 (40x lens). Secondary antibody: Cy3-conjugated Goat anti-Rabbit IgG (H+L) (STJS001166) at 1:500 dilution. Blue: DAPI for nuclear staining.



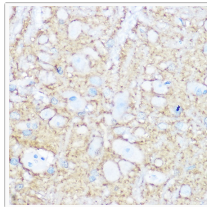
Western blot analysis of various lysates using NCAM1/CD56 Rabbit pAb (STJ110222) at 1:500 dilution.
 Secondary antibody: HRP-conjugated Goat anti-Rabbit IgG (H+L) (STJS000856) at 1:10000 dilution.
 Lysates/ proteins: 25 Mu g per lane.
 Blocking buffer: 3 % nonfat dry milk in TBST.
 Detection: ECL Basic Kit
 Exposure time: 90s.



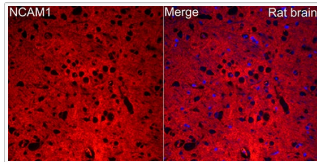
Western blot analysis of lysates from SH-SY5Y cells using NCAM1/CD56 Rabbit pAb (STJ110222) at 1:500 dilution.
 Secondary antibody: HRP-conjugated Goat anti-Rabbit IgG (H+L) (STJS000856) at 1:10000 dilution.
 Lysates/proteins: 25 Mu g per lane.
 Blocking buffer: 3% nonfat dry milk in TBST.
 Detection: ECL Enhanced Kit
 Exposure time: 90s.



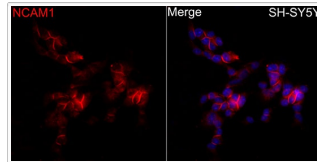
Immunohistochemistry analysis of paraffin-embedded Mouse brain tissue using NCAM1/CD56 Rabbit pAb (STJ110222) at a dilution of 1:100 (40x lens). Microwave antigen retrieval was performed with 0.01 M Tris-EDTA buffer (pH 9.0) prior to immunohistochemistry staining.



Immunohistochemistry analysis of paraffin-embedded Rat brain tissue using NCAM1/CD56 Rabbit pAb (STJ110222) at a dilution of 1:100 (40x lens). Microwave antigen retrieval was performed with 0.01 M Tris-EDTA buffer (pH 9.0) prior to immunohistochemistry staining.



Immunofluorescence analysis of rat brain cells using NCAM1/CD56 Rabbit pAb (STJ110222) at dilution of 1:20 (40x lens). Secondary antibody: Cy3-conjugated Goat anti-Rabbit IgG (H+L) (STJS001166) at 1:500 dilution. Blue: DAPI for nuclear staining.



Immunofluorescence analysis of SH-SY5Y cells using NCAM1/CD56 Rabbit pAb (STJ110222) at dilution of 1:20 (40x lens). Secondary antibody: Cy3-conjugated Goat anti-Rabbit IgG (H+L) (STJS001166) at 1:500 dilution. Blue: DAPI for nuclear staining.