

## Anti-CAPRN1 antibody (1-709) (STJ110219)

### GENERAL INFORMATION

|               |                    |
|---------------|--------------------|
| Product Type  | Primary antibodies |
| Applications  | WB/IF/ICC/ELISA    |
| Host / Source | Rabbit             |
| Reactivity    | Human/Mouse/Rat    |

### PRODUCT PROPERTIES

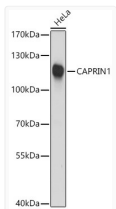
|                     |   |
|---------------------|---|
| Clonality           | Polyclonal  |
| Concentration       | Lot specific  |
| Conjugation         | Unconjugated  |
| Purification        | Affinity purification   |
| Dilution Range      | WB:1:1000-1:5000<br>IF/CC:1:50-1:200<br>ELISA:Recommended starting concentration is 1 Mu g/mL. Please optimize the concentration based on your specific assay requirements. |
| Formulation         | PBS with 0.05% Proclin300, 50% Glycerol, pH 7.3.  |
| Isotype             | IgG   |
| Molecular Weight    | Protein Mw: 78kDa<br>Observed Mw: 120kDa  |
| Storage Instruction | Store at -20°C for up to 1 year from the date of receipt, and avoid repeat freeze-thaw cycles.  |

### TARGET INFORMATION

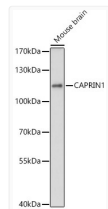
|                    |  |
|--------------------|--|
| Gene ID            | <a href="#">4076</a>   |
| Gene Symbol        | <a href="#">CAPRN1</a>   |
| UniProt ID         | <a href="#">CAPR1_HUMAN</a>  |
| Immunogen Region   | 1-709  |
| Immunogen Sequence | MPSATSHSGSGSKSSGPPPPP SGSSGSEAAAGAGAAAPASQ HPTATGTGAVQTEAMKQILGV<br>IDKCLRNLKLEKKGKLDYQE RMNKGRLNQDQLDAVSKYQ EVTNNLEFAKELQRFMALS<br>QDIQKTIKKTARREQLMREE AEQKRLKTVLELQYVLDKLG DDEVRTLKQGLNGVPISE<br>EELSLLDEFYKLVDPERDMS LRLNEQYEHASIHLDLLEG KEKPVCGTTYKVLKEIVER |
| Specificity        | Recombinant fusion protein containing a sequence corresponding to amino acids 1-300 of human CAPRN1 (NP_005889.3).   |

### ADDITIONAL INFORMATION

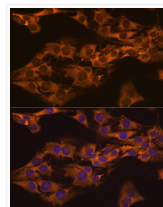
Note **STRICTLY FOR FURTHER SCIENTIFIC RESEARCH USE ONLY (RUO). MUST NOT TO BE USED IN DIAGNOSTIC OR THERAPEUTIC APPLICATIONS.**



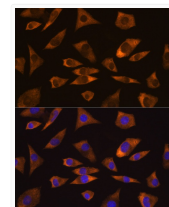
Western blot analysis of lysates from HeLa cells, using CAPRN1 Rabbit pAb (STJ110219) at 1:3000 dilution.  
 Secondary antibody: HRP-conjugated Goat anti-Rabbit IgG (H+L) (STJS000856) at 1:10000 dilution.  
 Lysates/proteins: 25 Mu g per lane.  
 Blocking buffer: 3% nonfat dry milk in TBST.  
 Detection: ECL Basic Kit  
 Exposure time: 10s.



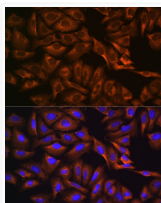
Western blot analysis of lysates from Mouse brain, using CAPRN1 Rabbit pAb (STJ110219) at 1:3000 dilution.  
 Secondary antibody: HRP-conjugated Goat anti-Rabbit IgG (H+L) (STJS000856) at 1:10000 dilution.  
 Lysates/proteins: 25 Mu g per lane.  
 Blocking buffer: 3% nonfat dry milk in TBST.  
 Detection: ECL Basic Kit  
 Exposure time: 30s.



Immunofluorescence analysis of C6 cells using CAPRN1 Rabbit pAb (STJ110219) at dilution of 1:100 (40x lens). Secondary antibody: Cy3-conjugated Goat anti-Rabbit IgG (H+L) (STJS001166) at 1:500 dilution. Blue: DAPI for nuclear staining.



Immunofluorescence analysis of L929 cells using CAPRN1 Rabbit pAb (STJ110219) at dilution of 1:100 (40x lens). Secondary antibody: Cy3-conjugated Goat anti-Rabbit IgG (H+L) (STJS001166) at 1:500 dilution. Blue: DAPI for nuclear staining.



Immunofluorescence analysis of U-2 OS cells using CAPRN1 Rabbit pAb (STJ110219) at dilution of 1:100 (40x lens). Secondary antibody: Cy3-conjugated Goat anti-Rabbit IgG (H+L) (STJS001166) at 1:500 dilution. Blue: DAPI for nuclear staining.