

Anti-KIF11 antibody (797-1056) (STJ110216)

GENERAL INFORMATION

Product Type	Primary antibodies
Applications	WB/IF/ICC/ELISA
Host / Source	Rabbit
Reactivity	Human

PRODUCT PROPERTIES

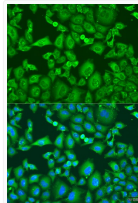
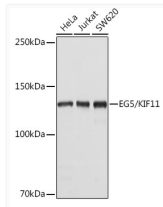
Clonality	Polyclonal
Concentration	Lot specific
Conjugation	Unconjugated
Purification	Affinity purification
Dilution Range	WB:1:500-1:1000 IF/CC:1:50-1:100 ELISA:Recommended starting concentration is 1 Mu g/mL. Please optimize the concentration based on your specific assay requirements.
Formulation	PBS with 0.02% Sodium Azide, 50% Glycerol, pH 7.3.
Isotype	IgG
Molecular Weight	Protein Mw: 119kDa Observed Mw: 130kDa
Storage Instruction	Store at -20°C for up to 1 year from the date of receipt, and avoid repeat freeze-thaw cycles.

TARGET INFORMATION

Gene ID	3832
Gene Symbol	KIF11
UniProt ID	KIF11_HUMAN
Immunogen Region	797-1056
Immunogen Sequence	SVKHSDKLNGLNLEKISQETE QRCESLNTRTVYFSEQWVSS LNEREQELHNLLEVVSQCCE ASSSDITEKSDGRKAAHEKQ HNFILDQMTIDEDKLIQNL ELNETIKIGLTKLNCFLEQD LKLDIPTGTTPQRKSYLYPS TLV RTEPREHLLDQLKRKQP ELLMMLNCSENNKEETIPDV DVEEAVLGQYTEEPLSQEPS VDAGVDCSSIGGV PFFQHKK SHGKDKENRGINTLERSKV
Specificity	Recombinant fusion protein containing a sequence corresponding to amino acids 797-1056 of human EG5/EG5/KIF11 (NP_004514.2).

ADDITIONAL INFORMATION

Note **STRICTLY FOR FURTHER SCIENTIFIC RESEARCH USE ONLY (RUO). MUST NOT TO BE USED IN DIAGNOSTIC OR THERAPEUTIC APPLICATIONS.**



Western blot analysis of various lysates using EG5/KIF11 Rabbit pAb (STJ110216) at 1:1000 dilution.

Secondary antibody: HRP-conjugated Goat anti-Rabbit IgG (H+L) (STJS000856) at 1:10000 dilution.

Lysates/proteins: 25 Mu g per lane.
Blocking buffer: 3% nonfat dry milk in TBST.
Detection: ECL Basic Kit
Exposure time: 5s.

Immunofluorescence analysis of U2OS cells using EG5/KIF11 Rabbit pAb (STJ110216) at dilution of 1:100. Secondary antibody: Cy3-conjugated Goat anti-Rabbit IgG (H+L) (STJS001166) at 1:500 dilution. Blue: DAPI for nuclear staining.