

Anti-KCNS3 antibody (1-180) (STJ110215)

GENERAL INFORMATION

Product Type	Primary antibodies
Applications	WB/IHC-P/ELISA
Host / Source	Rabbit
Reactivity	Human/Mouse/Rat

PRODUCT PROPERTIES

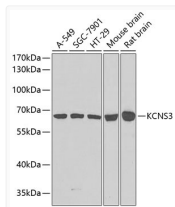
Clonality	Polyclonal
Concentration	Lot specific
Conjugation	Unconjugated
Purification	Affinity purification
Dilution Range	WB:1:500-1:2000 IHC-P:1:50-1:200 ELISA:Recommended starting concentration is 1 Mu g/mL. Please optimize the concentration based on your specific assay requirements.
Formulation	PBS with 0.02% Sodium Azide, 50% Glycerol, pH 7.3.
Isotype	IgG
Molecular Weight	Protein Mw: 56kDa Observed Mw: 56kDa
Storage Instruction	Store at -20°C for up to 1 year from the date of receipt, and avoid repeat freeze-thaw cycles.

TARGET INFORMATION

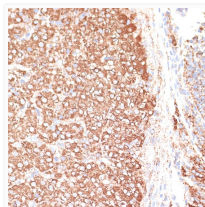
Gene ID	3790
Gene Symbol	KCNS3
UniProt ID	KCNS3_HUMAN
Immunogen Region	1-180
Immunogen Sequence	MVFGEEFFHRPGQDEELVNLN VGGFKQSDVQSTLLRFPHTR LGKLLTCHSEEAILCDDY SVADKEYYFDRNPSLFRYVL NFYYTGKLVMEELCVFSFC QEIEYWGINELFIDSCCSNR YQERKEENHEKDWQKSHDV STDSSFEESSLFEKELEKFD TLRFGQLRKKIWIRMPAY
Specificity	Recombinant fusion protein containing a sequence corresponding to amino acids 1-180 of human KCNS3 (NP_002243.3).

ADDITIONAL INFORMATION

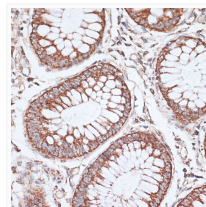
Note **STRICTLY FOR FURTHER SCIENTIFIC RESEARCH USE ONLY (RUO). MUST NOT TO BE USED IN DIAGNOSTIC OR THERAPEUTIC APPLICATIONS.**



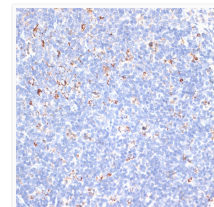
Western blot analysis of various lysates using KCNS3 Rabbit pAb (STJ110215) at 1:1000 dilution.
Secondary antibody: HRP-conjugated Goat anti-Rabbit IgG (H+L) (STJS000856) at 1:10000 dilution.
Lysates/proteins: 25 Mu g per lane.
Blocking buffer: 3% nonfat dry milk in TBST.
Detection: ECL Basic Kit
Exposure time: 90s.



Immunohistochemistry analysis of paraffin-embedded Rat ovary using KCNS3 Rabbit pAb (STJ110215) at dilution of 1:100 (40x lens).
Microwave antigen retrieval performed with 0.01M PBS Buffer (pH 7.2) prior to immunohistochemistry staining.



Immunohistochemistry analysis of paraffin-embedded Human colon carcinoma using KCNS3 Rabbit pAb (STJ110215) at dilution of 1:100 (40x lens).
Microwave antigen retrieval performed with 0.01M PBS Buffer (pH 7.2) prior to immunohistochemistry staining.



Immunohistochemistry analysis of paraffin-embedded Mouse spleen using KCNS3 Rabbit pAb (STJ110215) at dilution of 1:100 (40x lens).
Microwave antigen retrieval performed with 0.01M PBS Buffer (pH 7.2) prior to immunohistochemistry staining.