

Anti-CRYGS antibody (1-178) (STJ110198)

GENERAL INFORMATION

Product Type	Primary antibodies
Applications	WB/ELISA
Host / Source	Rabbit
Reactivity	Human/Mouse/Rat

PRODUCT PROPERTIES

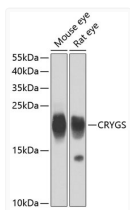
Clonality	Polyclonal
Concentration	Lot specific
Conjugation	Unconjugated
Purification	Affinity purification
Dilution Range	WB:1:500-1:2000 ELISA:Recommended starting concentration is 1 µg/mL. Please optimize the concentration based on your specific assay requirements.
Formulation	PBS with 0.02% Sodium Azide, 50% Glycerol, pH 7.3.
Isotype	IgG
Molecular Weight	Protein Mw: 21kDa Observed Mw: 21kDa
Storage Instruction	Store at -20°C for up to 1 year from the date of receipt, and avoid repeat freeze-thaw cycles.

TARGET INFORMATION

Gene ID	1427
Gene Symbol	CRYGS
UniProt ID	CRYGS_HUMAN
Immunogen Region	1-178
Immunogen Sequence	MSKTGKITYEDKNFQGRY YDCDCDCADFHTYLSRCNSI KVEGGTWAVYERPINFAGYMY ILPQGEYPEYQRWMLNDRL SSCRAVHLPSGGQYKIQIFE KGDFSGQMYETTEDCPSIME QFHMREIHSCKVLEGVWIFY ELPNYRGRQYLLDKKEYRKP IDWGAASPAVQSFRRIIVE
Specificity	Recombinant fusion protein containing a sequence corresponding to amino acids 1-178 of human CRYGS (NP_060011.1).

ADDITIONAL INFORMATION

Note STRICTLY FOR FURTHER SCIENTIFIC RESEARCH USE ONLY (RUO). MUST NOT TO BE USED IN DIAGNOSTIC OR THERAPEUTIC APPLICATIONS.



Western blot analysis of various lysates using CRYGS Rabbit pAb (STJ110198) at 1:4000 dilution.

Secondary antibody: HRP-conjugated Goat anti-Rabbit IgG (H+L) (STJS000856) at 1:10000 dilution.

Lysates/proteins: 25 µg per lane.

Blocking buffer: 3% nonfat dry milk in TBST.

Detection: ECL Basic Kit

Exposure time: 1s.