

Anti-ALDH9A1 antibody (1-180) (STJ110185)

GENERAL INFORMATION

Product Type	Primary antibodies
Applications	WB/IF/ICC/ELISA
Host / Source	Rabbit
Reactivity	Human/Mouse/Rat

PRODUCT PROPERTIES

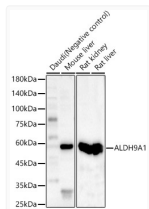
Clonality	Polyclonal
Concentration	Lot specific
Conjugation	Unconjugated
Purification	Affinity purification
Dilution Range	WB:1:500-1:2000 IF/CC:1:50-1:200 ELISA:Recommended starting concentration is 1 Mu g/mL. Please optimize the concentration based on your specific assay requirements.
Formulation	PBS with 0.05% Proclin300, 50% Glycerol, pH7.3.
Isotype	IgG
Molecular Weight	Protein Mw: 54kDa Observed Mw: 54kDa
Storage Instruction	Store at -20°C for up to 1 year from the date of receipt, and avoid repeat freeze-thaw cycles.

TARGET INFORMATION

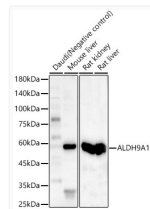
Gene ID	223
Gene Symbol	ALDH9A1
UniProt ID	AL9A1_HUMAN
Immunogen Region	1-180
Immunogen Sequence	MFLRAGLAALSPLLRSLRPS PVAAMSTGTFVVSQPLNYRG GARVEPADASGTEKAFEPAT GRVIATFTCSGEKEVNLAVQ NAKAAFKIWSQKSGMERCRI LLEAARIIREREDEIATMEC INNGKSIFEARLDIDISWQC LEYYAGLAASMAGEHIQLPG GSFYTRRREPLGVCVGIGAW
Specificity	Recombinant fusion protein containing a sequence corresponding to amino acids 1-180 of human ALDH9A1 (NP_000687.3).

ADDITIONAL INFORMATION

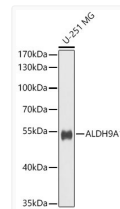
Note **STRICTLY FOR FURTHER SCIENTIFIC RESEARCH USE ONLY (RUO). MUST NOT TO BE USED IN DIAGNOSTIC OR THERAPEUTIC APPLICATIONS.**



Western blot analysis of lysates from wild type (WT) and ALDH9A1 knockout (KO) 293T cells, using [KO Validated] ALDH9A1 Rabbit pAb (STJ110185) at 1:1000 dilution.
 Secondary antibody: HRP-conjugated Goat anti-Rabbit IgG (H+L) (STJS000856) at 1:10000 dilution.
 Lysates/proteins: 25 Mu g per lane.
 Blocking buffer: 3% nonfat dry milk in TBST.
 Detection: ECL Basic Kit
 Exposure time: 5s.



Western blot analysis of various lysates, using ALDH9A1 Rabbit pAb (STJ110185) at 1:1500 dilution.
 Secondary antibody: HRP-conjugated Goat anti-Rabbit IgG (H+L) (STJS000856) at 1:10000 dilution.
 Lysates/proteins: 25 Mu g per lane.
 Blocking buffer: 3% nonfat dry milk in TBST.
 Detection: ECL Basic Kit
 Exposure time: 60s.



Western blot analysis of lysates from U-251 MG cells using ALDH9A1 Rabbit pAb (STJ110185) at 1:1000 dilution.
 Secondary antibody: HRP-conjugated Goat anti-Rabbit IgG (H+L) (STJS000856) at 1:10000 dilution.
 Lysates/proteins: 25 Mu g per lane.
 Blocking buffer: 3% nonfat dry milk in TBST.
 Detection: ECL Basic Kit
 Exposure time: 60s.