

Anti-CHRFAM7A antibody (1-150) (STJ110154)

GENERAL INFORMATION

Product Type	Primary antibodies
Applications	WB/IHC-P/ELISA
Host / Source	Rabbit
Reactivity	Human/Mouse/Rat

PRODUCT PROPERTIES

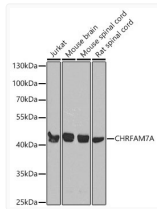
Clonality	Polyclonal
Concentration	Lot specific
Conjugation	Unconjugated
Purification	Affinity purification
Dilution Range	WB:1:500-1:2000 IHC-P:1:50-1:200 ELISA:Recommended starting concentration is 1 Mu g/mL. Please optimize the concentration based on your specific assay requirements.
Formulation	PBS with 0.02% Sodium Azide, 50% Glycerol, pH 7.3.
Isotype	IgG
Molecular Weight	Protein Mw: 46kDa Observed Mw: 46kDa/
Storage Instruction	Store at -20°C for up to 1 year from the date of receipt, and avoid repeat freeze-thaw cycles.

TARGET INFORMATION

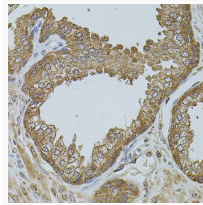
Gene ID	89832
Gene Symbol	CHRFAM7A
UniProt ID	CRFM7_HUMAN
Immunogen Region	1-150
Immunogen Sequence	MQKYCIYQHFQQLLIQHLW IAANCDIADERFDATFHTNV LVNSSGHCQYLPPGIFKSSC YIDVRWFPFDVQHCCLKFGS WSYGGWSLDLQMQEADISGY IPNGEWDLVGIPGKRSEFY ECCKEYPDPVTFVTMTMRRRT LYYGLNLLIP
Specificity	Recombinant fusion protein containing a sequence corresponding to amino acids 1-150 of human CHRFAM7A (NP_647536.1).

ADDITIONAL INFORMATION

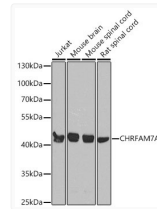
Note **STRICTLY FOR FURTHER SCIENTIFIC RESEARCH USE ONLY (RUO). MUST NOT TO BE USED IN DIAGNOSTIC OR THERAPEUTIC APPLICATIONS.**



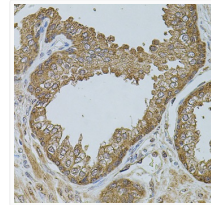
Western blot analysis of various lysates using CHRFAM7A Rabbit pAb (STJ110154) at 1:1000 dilution.
Secondary antibody: HRP-conjugated Goat anti-Rabbit IgG (H+L) (STJS000856) at 1:10000 dilution.
Lysates/ proteins: 25 Mu g per lane.
Blocking buffer: 3 % nonfat dry milk in TBST.
Detection: ECL Basic Kit
Exposure time: 15s.



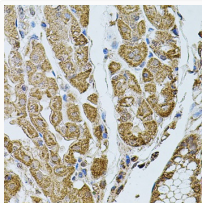
Immunohistochemistry analysis of paraffin-embedded Human prostate using CHRFAM7A Rabbit pAb (STJ110154) at dilution of 1:100 (40x lens). Microwave antigen retrieval performed with 0. 01M PBS Buffer (pH 7. 2) prior to immunohistochemistry staining.



Western blot analysis of various lysates using CHRFAM7A Rabbit pAb (STJ110154) at 1:1000 dilution.
Secondary antibody: HRP Goat Anti-Rabbit IgG (H+L) (STJS000856) at 1:10000 dilution.
Lysates/ proteins: 25 Mu g per lane.
Blocking buffer: 3 % nonfat dry milk in TBST.
Detection: ECL Basic Kit
Exposure time: 15s.



Immunohistochemistry analysis of paraffin-embedded Human prostate using CHRFAM7A Rabbit pAb (STJ110154) at dilution of 1:100 (40x lens). Perform microwave antigen retrieval with 10 mM PBS buffer pH 7. 2 before commencing with immunohistochemistry staining protocol.



Immunohistochemistry analysis of paraffin-embedded Human stomach using CHRFAM7A Rabbit pAb (STJ110154) at dilution of 1:100 (40x lens). Perform microwave antigen retrieval with 10 mM PBS buffer pH 7. 2 before commencing with immunohistochemistry staining protocol.