

Anti-ATG4D antibody (265-474) (STJ110152)

GENERAL INFORMATION

Product Type	Primary antibodies
Applications	WB/ELISA
Host / Source	Rabbit
Reactivity	Rat

PRODUCT PROPERTIES

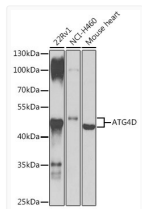
Clonality	Polyclonal
Concentration	Lot specific
Conjugation	Unconjugated
Purification	Affinity purification
Dilution Range	WB:1:500-1:1000 ELISA:Recommended starting concentration is 1 Mu g/mL. Please optimize the concentration based on your specific assay requirements.
Formulation	PBS with 0.02% Sodium Azide, 50% Glycerol, pH 7.3.
Isotype	IgG
Molecular Weight	Protein Mw: 53kDa Observed Mw: 53kDa
Storage Instruction	Store at -20°C for up to 1 year from the date of receipt, and avoid repeat freeze-thaw cycles.

TARGET INFORMATION

Gene ID	84971
Gene Symbol	ATG4D
UniProt ID	ATG4D_HUMAN
Immunogen Region	265-474
Immunogen Sequence	DVTRLVVYVYVSDCTVYKADV ARLVARPDPTAEWKSVMILV PVRLGGETLNPVYVPCVKEL LRCELCLGIMGGKPRHSLYF IGYQDDFLLYLDPHYCQPTV DVSQADFPLESFHCTSPRKM AFAKMDPSCVTGFGYAGDRKE FETLCSELTRVLSSSSATER YPMFTLAEGHAQDHSLLDLC SQLAQPTLRLPRTGRLLRAK RPSSSEDFVFL
Specificity	Recombinant fusion protein containing a sequence corresponding to amino acids 265-474 of human ATG4D (NP_116274.3).

ADDITIONAL INFORMATION

Note STRICTLY FOR FURTHER SCIENTIFIC RESEARCH USE ONLY (RUO). MUST NOT TO BE USED IN DIAGNOSTIC OR THERAPEUTIC APPLICATIONS.



Western blot analysis of lysates from Rat skeletal muscle using ATG4D Rabbit pAb (STJ110152) at 1:1000 dilution.

Secondary antibody: HRP-conjugated Goat anti-Rabbit IgG (H+L) (STJS000856) at 1:10000 dilution.

Lysates/proteins: 25 Mu g per lane.

Blocking buffer: 3% nonfat dry milk in TBST.

Detection: ECL Basic Kit

Exposure time: 90s.