

Anti-NYX antibody (282-481) (STJ110140)

GENERAL INFORMATION

Product Type	Primary antibodies
Applications	WB/IHC-P/ELISA
Host / Source	Rabbit
Reactivity	Human/Mouse

PRODUCT PROPERTIES

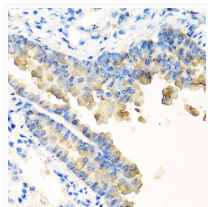
Clonality	Polyclonal
Concentration	Lot specific
Conjugation	Unconjugated
Purification	Affinity purification
Dilution Range	WB:1:500-1:2000 IHC-P:1:50-1:100 ELISA:Recommended starting concentration is 1 μ g/mL. Please optimize the concentration based on your specific assay requirements.
Formulation	PBS with 0.02% Sodium Azide, 50% Glycerol, pH 7.3.
Isotype	IgG
Molecular Weight	Protein Mw: 52kDa Observed Mw: 52kDa
Storage Instruction	Store at -20°C for up to 1 year from the date of receipt, and avoid repeat freeze-thaw cycles.

TARGET INFORMATION

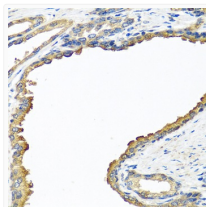
Gene ID	60506
Gene Symbol	NYX
UniProt ID	NYX_HUMAN
Immunogen Region	282-481
Immunogen Sequence	LLYLDRNSIAFVEEGAFQNL SGLLALHLNNGNRLTVLAWVA FQPGFFLGRFLFRNPWCCD CRLEWLRDWMEGSGRVTDVP CASPGSVAGLDLSQVTFGRS SDGLCVDPEELNLTSSPGP SPEPAATTVSRFSSLLSKLL APRVPVEEAANTTGGLANAS LSDSLSSRGVGGAGRQPWFL LASCLLPVSAQHVVVFLQMD
Specificity	Recombinant fusion protein containing a sequence corresponding to amino acids 282-481 of human NYX (NP_072089.1).

ADDITIONAL INFORMATION

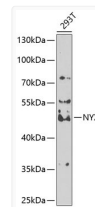
Note STRICTLY FOR FURTHER SCIENTIFIC RESEARCH USE ONLY (RUO). MUST NOT TO BE USED IN DIAGNOSTIC OR THERAPEUTIC APPLICATIONS.



Immunohistochemistry analysis of paraffin-embedded mouse lung using NYX antibody (STJ110140) at dilution of 1:100 (40x lens). Perform microwave antigen retrieval with 10 mM PBS buffer pH 7.2 before commencing with immunohistochemistry staining protocol.



Immunohistochemistry analysis of paraffin-embedded human prostate using NYX antibody (STJ110140) at dilution of 1:100 (40x lens). Perform microwave antigen retrieval with 10 mM PBS buffer pH 7.2 before commencing with immunohistochemistry staining protocol.



Western blot analysis of extracts of 293T cells, using NYX antibody (STJ110140) at 1:1000 dilution. Secondary antibody: HRP Goat Anti-Rabbit IgG (H+L) (STJS000856) at 1:10000 dilution. Lysates/proteins: 25 μ g per lane. Blocking buffer: 3% nonfat dry milk in TBST. Detection: ECL Enhanced Kit. Exposure time: 90s.