

Anti-ALG1 antibody (215-464) (STJ110128)

GENERAL INFORMATION

Product Type	Primary antibodies
Applications	WB/ELISA
Host / Source	Rabbit
Reactivity	Human/Mouse/Rat

PRODUCT PROPERTIES

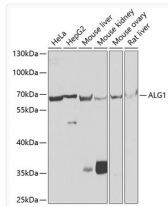
Clonality	Polyclonal
Concentration	Lot specific
Conjugation	Unconjugated
Purification	Affinity purification
Dilution Range	WB:1:500-1:2000 ELISA:Recommended starting concentration is 1 µg/mL. Please optimize the concentration based on your specific assay requirements.
Formulation	PBS with 0.02% Sodium Azide, 50% Glycerol, pH 7.3.
Isotype	IgG
Molecular Weight	Protein Mw: 53kDa Observed Mw: 60kDa
Storage Instruction	Store at -20°C for up to 1 year from the date of receipt, and avoid repeat freeze-thaw cycles.

TARGET INFORMATION

Gene ID	56052
Gene Symbol	ALG1
UniProt ID	ALG1_HUMAN
Immunogen Region	215-464
Immunogen Sequence	YDKPASFFKETPLDLOHRLF MKLGSMSHSPFRARSEPEDPV TERSAFTERDAGSGLVTRLR ERPALLVSSTSWTEDEDFSI LLAALEKFEQLTDGHNLP LVCVITGKGPLREYYSRLIH QKHFQHIQVCTPWLEAEDYP LLLGSADLGVCLHTSSGLD LPMKVVDMFGCCLPVCVAVNF KCLHELKHEENGLVFEDSE ELAAQLQMLFSNFPDPAGKL NQFRKNLRESQQLRWDESW
Specificity	Recombinant fusion protein containing a sequence corresponding to amino acids 215-464 of human ALG1 (NP_061982.3).

ADDITIONAL INFORMATION

Note **STRICTLY FOR FURTHER SCIENTIFIC RESEARCH USE ONLY (RUO). MUST NOT TO BE USED IN DIAGNOSTIC OR THERAPEUTIC APPLICATIONS.**



Western blot analysis of extracts of various cell lines, using ALG1 antibody (STJ110128) at 1:1000 dilution. Secondary antibody: HRP Goat Anti-Rabbit IgG (H+L) (STJS000856) at 1:10000 dilution. Lysates/proteins: 25 µg per lane. Blocking buffer: 3% nonfat dry milk in TBST. Detection: ECL Basic Kit. Exposure time: 30s.